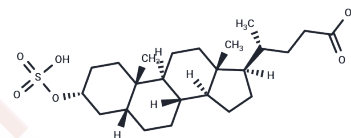


Sulfolithocholic acid

Chemical Properties

CAS No. :	34669-57-3
Formula:	C ₂₄ H ₄₀ O ₆ S
Molecular Weight:	456.64
Storage:	Powder: -20°C for 3 years In solvent: -80°C for 1 year Actual storage temperature shall be subject to the COA.



Biological Description

Description	Sulfolithocholic acid is a bioactive chemical.
Targets(IC50)	Others

Preparing Stock Solutions

	1mg	5mg	10mg
1 mM	2.1899 mL	10.9495 mL	21.8991 mL
5 mM	0.438 mL	2.1899 mL	4.3798 mL
10 mM	0.219 mL	1.095 mL	2.1899 mL
50 mM	0.0438 mL	0.219 mL	0.438 mL

Please select the appropriate solvent to prepare the stock solution, according to the solubility of the product in different solvents. Please use it as soon as possible.

Note: The dilution table applies only to solid products. For liquid products, please calculate the stock solution based on the stated concentration and/or density.

Reference

- Jorge A, Fay O, Palazzi J, Sánchez D, Tanno H, Díaz M. [Determination of cholic and sulfolithocholic acids in various hepatopathies]. *Acta Gastroenterol Latinoam*. 1982;12(2):143-7. Spanish. PubMed PMID: 7158242.
- Tanida N, Sawada K, Kawaura A, Oda M, Shimoyama T, Narisawa T. Effects of oral administration of sulfolithocholic acid disodium salt and lithocholic acid sodium salt on N-methyl-N-nitrosourea-induced colonic tumorigenesis in conventional rats. *Cancer Res*. 1989 Mar 1;49(5):1178-81. PubMed PMID: 2917349.
- Bansal S, Lau AJ. Fast and sensitive quantification of human liver cytosolic lithocholic acid sulfation using ultra-high performance liquid chromatography-tandem mass spectrometry. *J Chromatogr B Analyt Technol Biomed Life Sci*. 2016 Feb 1;1011:171-8. doi: 10.1016/j.jchromb.2015.12.063. Epub 2016 Jan 4. PubMed PMID: 26773894.
- Nakao K, Ohhara H, Taki T, Wakabayashi T, Ohgoh T. [Hepatotoxic effects of lithocholic acid and sulfolithocholic acid in rabbits (author's transl)]. *Yakugaku Zasshi*. 1980 Aug;100(8):792-8. Japanese. PubMed PMID: 7441488.

Inhibitor · Natural Compounds · Compound Libraries · Recombinant Proteins

This product is for Research Use Only · Not for Human or Veterinary or Therapeutic Use

Tel:781-999-4286 E_mail:info@targetmol.com Address:34 Washington Street,Wellesley Hills,MA 02481