

## HBcAg [Hepatitis B virus] (18-27)

### Chemical Properties

CAS No. :

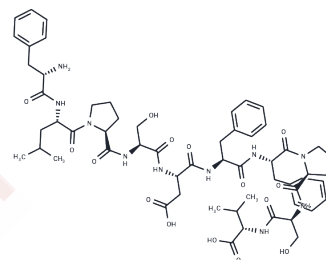
Formula: C58H78N10O15

Molecular Weight: 1155.3

Keep away from moisture

Storage: Powder: -20°C for 3 years | In solvent: -80°C for 1 year

Actual storage temperature shall be subject to the COA.



### Biological Description

Description	HBcAg (core antigen) is a hepatitis B viral protein. It is an indicator of active viral replication; this means the person infected with Hepatitis B can likely transmit the virus on to another person.
Targets(IC50)	Others
In vitro	<p>HBeAg is the extracellular form of HBcAg, hence why the presence of both are markers of viral replication, and antibodies to these antigens are markers of a decline in replication. Multiple protein products can be produced from the same DNA sequence. When 'ORF Core' and 'Pre C' are translated together, the result is 'HBeAg'. Whereas HBcAg is considered 'particulate', 'HBeAg' is considered 'nonparticulate' or 'secretory'. Both HBeAg and HBcAg are made from the same reading frame, but HBeAg is secreted from cells and accumulates in serum as an immunologically distinct soluble antigen. HBeAg is secreted and found in the serum of patients and serves as a marker of active replication in chronic hepatitis. Although the function of HBeAg is not clearly understood, one study demonstrated that it downregulated Toll-like receptor 2 expressions on hepatocytes and monocytes leading to a decrease in cytokine expression. HBeAg is dispensable for replication, as mutant viruses with defects in the pre-C region are both infectious and pathogenic [1][2][3].</p>

### Solubility Information

Solubility	DMSO: ≥115.5 mg/mL, Sonication is recommended. (< 1 mg/ml refers to the product slightly soluble or insoluble)
------------	---

### Preparing Stock Solutions

---

	<b>1mg</b>	<b>5mg</b>	<b>10mg</b>
1 mM	0.8656 mL	4.3279 mL	8.6558 mL
5 mM	0.1731 mL	0.8656 mL	1.7312 mL
10 mM	0.0866 mL	0.4328 mL	0.8656 mL
50 mM	0.0173 mL	0.0866 mL	0.1731 mL

---

Please select the appropriate solvent to prepare the stock solution, according to the solubility of the product in different solvents. Please use it as soon as possible.

Note: The dilution table applies only to solid products. For liquid products, please calculate the stock solution based on the stated concentration and/or density.

**Inhibitor · Natural Compounds · Compound Libraries · Recombinant Proteins**

This product is for Research Use Only · Not for Human or Veterinary or Therapeutic Use

Tel:781-999-4286 E\_mail:info@targetmol.com Address:34 Washington Street,Wellesley Hills,MA 02481