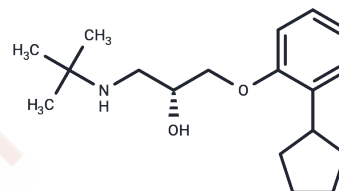


(+)-Penbutolol

Chemical Properties

| | |
|-------------------|---|
| CAS No. : | 38363-41-6 |
| Formula: | C ₁₈ H ₂₉ NO ₂ |
| Molecular Weight: | 291.43 |
| Storage: | Powder: -20°C for 3 years In solvent: -80°C for 1 year Actual storage temperature shall be subject to the COA. |



Biological Description

| | |
|----------------------------|--|
| Description | (+)-Penbutolol is an antagonist of β -adrenoceptor (IC ₅₀ of 0.74 μ M). (+)-Penbutolol is an optical isomer of l-penbutolol with Na ⁺ channel-blocking action. |
| Targets(IC ₅₀) | Others, Adrenergic Receptor |
| In vitro | LPC is concentration-dependent induce (+)-penbutolol on the [Ca ²⁺] _i -increase [1]. (+)-penbutolol inhibits the rounding of cells dose dependently (8 \pm 4%, 56 \pm 4% and 66 \pm 2% at the concentrations of 10 ⁻⁶ M, 5 \times 10 ⁻⁶ M and 10 ⁻⁵ M, respectively)[2]. |

Preparing Stock Solutions

| | 1mg | 5mg | 10mg |
|-------|-----------|------------|------------|
| 1 mM | 3.4314 mL | 17.1568 mL | 34.3136 mL |
| 5 mM | 0.6863 mL | 3.4314 mL | 6.8627 mL |
| 10 mM | 0.3431 mL | 1.7157 mL | 3.4314 mL |
| 50 mM | 0.0686 mL | 0.3431 mL | 0.6863 mL |

Please select the appropriate solvent to prepare the stock solution, according to the solubility of the product in different solvents. Please use it as soon as possible.

Note: The dilution table applies only to solid products. For liquid products, please calculate the stock solution based on the stated concentration and/or density.

Reference

- Chen M, et al. Effects of beta-adrenoceptor antagonists on Ca(2+)-overload induced by lysophosphatidylcholine in rat isolated cardiomyocytes. Br J Pharmacol. 1996 Jun;118(4):865-70.
- Hashizume H, et al. Effects of antiischemic drugs on veratridine-induced hypercontracture in rat cardiac myocytes. Eur J Pharmacol. 1994 Dec 12;271(1):1-8.

Inhibitor · Natural Compounds · Compound Libraries · Recombinant Proteins

This product is for Research Use Only · Not for Human or Veterinary or Therapeutic Use

Tel:781-999-4286 E_mail:info@targetmol.com Address:34 Washington Street,Wellesley Hills,MA 02481