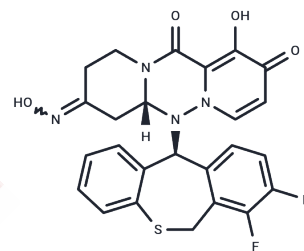


## Cap-dependent endonuclease-IN-13

## Chemical Properties

CAS No. :	2703046-60-8
Formula:	C <sub>25</sub> H <sub>20</sub> F <sub>2</sub> N <sub>4</sub> O <sub>4</sub> S
Molecular Weight:	510.51
Storage:	Powder: -20°C for 3 years   In solvent: -80°C for 1 year Actual storage temperature shall be subject to the COA.



## Biological Description

Description	Cap-dependent endonuclease-IN-13 is a potent inhibitor of cap-dependent endonuclease (CEN) and demonstrates research potential against influenza virus infection [influenza A only].
Targets(IC50)	Others, Influenza Virus

## Preparing Stock Solutions

	1mg	5mg	10mg
1 mM	1.9588 mL	9.7941 mL	19.5883 mL
5 mM	0.3918 mL	1.9588 mL	3.9177 mL
10 mM	0.1959 mL	0.9794 mL	1.9588 mL
50 mM	0.0392 mL	0.1959 mL	0.3918 mL

Please select the appropriate solvent to prepare the stock solution, according to the solubility of the product in different solvents. Please use it as soon as possible.

Note: The dilution table applies only to solid products. For liquid products, please calculate the stock solution based on the stated concentration and/or density.

**Inhibitor · Natural Compounds · Compound Libraries · Recombinant Proteins**

This product is for Research Use Only · Not for Human or Veterinary or Therapeutic Use

Tel: 781-999-4286 E\_mail: info@targetmol.com Address: 34 Washington Street, Wellesley Hills, MA 02481