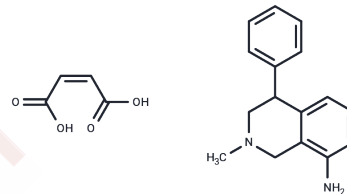


Nomifensine maleate

Chemical Properties

CAS No. :	32795-47-4
Formula:	C ₂₀ H ₂₂ N ₂ O ₄
Molecular Weight:	354.4
Storage:	Powder: -20°C for 3 years In solvent: -80°C for 1 year Actual storage temperature shall be subject to the COA.



Biological Description

Description	Nomifensine maleate (Nomifensine (maleate)) is a selective inhibitor of dopamine uptake. Nomifensine maleate is used in adult attention deficit disorder.
Targets(IC50)	Adrenergic Receptor,Dopamine Receptor

Solubility Information

Solubility	DMSO: 80 mg/mL (225.73 mM),Sonication is recommended. H ₂ O: 2.2 mg/mL (6.21 mM),Sonication is recommended. (< 1 mg/ml refers to the product slightly soluble or insoluble)
In vivo Formulation	10% DMSO+40% PEG300+5% Tween 80+45% Saline: 3.3 mg/mL (9.31 mM),Sonication is recommended. <i>Please add the solvents sequentially, clarifying the solution as much as possible before adding the next one. Dissolve by heating and/or sonication if necessary. Working solution is recommended to be prepared and used immediately. The formulation provided above is for reference purposes only. In vivo formulations may vary and should be modified based on specific experimental conditions.</i>

Preparing Stock Solutions

	1mg	5mg	10mg
1 mM	2.8217 mL	14.1084 mL	28.2167 mL
5 mM	0.5643 mL	2.8217 mL	5.6433 mL
10 mM	0.2822 mL	1.4108 mL	2.8217 mL
50 mM	0.0564 mL	0.2822 mL	0.5643 mL

Please select the appropriate solvent to prepare the stock solution, according to the solubility of the product in different solvents. Please use it as soon as possible.

Note: The dilution table applies only to solid products. For liquid products, please calculate the stock solution based on the stated concentration and/or density.

Reference

Kinney J L . Nomifensine maleate: a new second-generation antidepressant.[J]. Clinical Pharmacy, 1985, 4(6):625-636.

W Heptner, I Hornke, M Uihlein.Kinetics and metabolism of nomifensine.J Clin Psychiatry. 1984 Apr;45(4 Pt 2):21-5.

Inhibitor · Natural Compounds · Compound Libraries · Recombinant Proteins

This product is for Research Use Only· Not for Human or Veterinary or Therapeutic Use

Tel:781-999-4286 E_mail:info@targetmol.com Address:34 Washington Street,Wellesley Hills,MA 02481