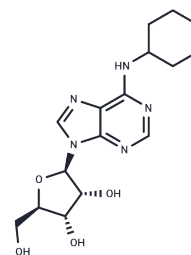


## N6-Cyclohexyladenosine

## Chemical Properties

CAS No. :	36396-99-3
Formula:	C16H23N5O4
Molecular Weight:	349.38
Storage:	Powder: -20°C for 3 years   In solvent: -80°C for 1 year Actual storage temperature shall be subject to the COA.



## Biological Description

Description	N6-Cyclohexyladenosine (CHA) is a selective agonist of A1 receptor with EC50 of 8.2 Nm. N6-Cyclohexyladenosine exerts anticonvulsant effects and protects against neuronal death. CHA was also found to inhibit the pressor effects of lumbar sympathetic nerve stimulation in rats.
Targets(IC50)	Epigenetic Reader Domain,Akt,Adenosine Receptor,PI3K

## Solubility Information

Solubility	DMSO: 99 mg/mL (283.36 mM),Sonication is recommended. (< 1 mg/ml refers to the product slightly soluble or insoluble)
In vivo Formulation	10% DMSO+40% PEG300+5% Tween 80+45% Saline: 3.3 mg/mL (9.45 mM),Sonication is recommended. <i>Please add the solvents sequentially, clarifying the solution as much as possible before adding the next one. Dissolve by heating and/or sonication if necessary. Working solution is recommended to be prepared and used immediately. The formulation provided above is for reference purposes only. In vivo formulations may vary and should be modified based on specific experimental conditions.</i>

## Preparing Stock Solutions

	1mg	5mg	10mg
1 mM	2.8622 mL	14.3111 mL	28.6221 mL
5 mM	0.5724 mL	2.8622 mL	5.7244 mL
10 mM	0.2862 mL	1.4311 mL	2.8622 mL
50 mM	0.0572 mL	0.2862 mL	0.5724 mL

Please select the appropriate solvent to prepare the stock solution, according to the solubility of the product in different solvents. Please use it as soon as possible.

Note: The dilution table applies only to solid products. For liquid products, please calculate the stock solution based on the stated concentration and/or density.

Reference

Asghari AA, et al. Adenosine A1 receptor agonist, N6-cyclohexyladenosine, protects myelin and induces remyelination in an experimental model of rat optic chiasm demyelination; electrophysiological and histopathological studies. J Neurol Sci. 2013 Feb 15;3

**Inhibitor · Natural Compounds · Compound Libraries · Recombinant Proteins**

This product is for Research Use Only· Not for Human or Veterinary or Therapeutic Use

Tel:781-999-4286 E\_mail:info@targetmol.com Address:34 Washington Street,Wellesley Hills,MA 02481