

GP2-114

Chemical Properties

CAS No. : 130783-39-0

Formula: C₁₉H₂₄N₂O₄

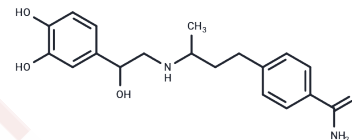
Molecular Weight: 344.4

Storage:

Store at low temperature, The compound is unstable in solution. Please use soon

Powder: -20°C for 3 years | In solvent: -80°C for 1 year

Actual storage temperature shall be subject to the COA.



Biological Description

Description	GP2-114 is a catecholamine motility mimetic that produces current-dependent cardiovascular effects when administered via transdermal iontophoresis and can be used to study coronary artery disease (CAD).
Targets(IC50)	Others, Adrenergic Receptor
In vitro	A 50% mixture of the RR and RS enantiomer forms of GP-2-128 (GP-2-114) has the same pharmacological characteristics as the pure RR enantiomer; GP-2-114 produces current-dependent cardiovascular effects when administered by transdermal iontophoresis.

Preparing Stock Solutions

	1mg	5mg	10mg
1 mM	2.9036 mL	14.518 mL	29.036 mL
5 mM	0.5807 mL	2.9036 mL	5.8072 mL
10 mM	0.2904 mL	1.4518 mL	2.9036 mL
50 mM	0.0581 mL	0.2904 mL	0.5807 mL

Please select the appropriate solvent to prepare the stock solution, according to the solubility of the product in different solvents. Please use it as soon as possible.

Note: The dilution table applies only to solid products. For liquid products, please calculate the stock solution based on the stated concentration and/or density.

Reference

Abou-Mohamed G, et al. Integrative cardiovascular actions of a novel catecholamine, GP-2-128. J Cardiovasc Pharmacol. 1994 Mar;23(3):485-91.

Inhibitor · Natural Compounds · Compound Libraries · Recombinant Proteins

This product is for Research Use Only · Not for Human or Veterinary or Therapeutic Use

Tel:781-999-4286 E_mail:info@targetmol.com Address:34 Washington Street,Wellesley Hills,MA 02481