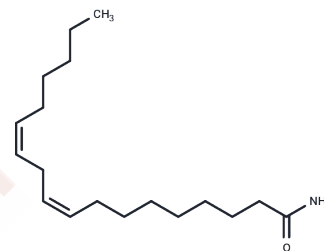


Linoleic Acid Amide

Chemical Properties

CAS No. :	3999-01-7
Formula:	C18H33NO
Molecular Weight:	279.46
Storage:	Keep away from moisture Powder: -20°C for 3 years In solvent: -80°C for 1 year <small>Actual storage temperature shall be subject to the COA.</small>



Biological Description

Description	Linoleic Acid Amide (Linoleamide) is derived from linoleic acid and regulates Ca ²⁺ flux by inhibiting the sarco/endoplasmic reticulum Ca ²⁺ -ATPase.
Targets(IC50)	Others, Calcium Channel

Solubility Information

Solubility	DMF: > 14 mg/mL, Sonication is recommended. DMSO: 18 mg/mL (64.41 mM), Sonication is recommended. Ethanol: > 22 mg/mL, Sonication is recommended. (< 1 mg/ml refers to the product slightly soluble or insoluble)
In vivo Formulation	10% DMSO+90% Corn Oil: 1.5 mg/mL (5.37 mM), Sonication is recommended. <i>Please add the solvents sequentially, clarifying the solution as much as possible before adding the next one. Dissolve by heating and/or sonication if necessary. Working solution is recommended to be prepared and used immediately. The formulation provided above is for reference purposes only. In vivo formulations may vary and should be modified based on specific experimental conditions.</i>

Preparing Stock Solutions

	1mg	5mg	10mg
1 mM	3.5783 mL	17.8916 mL	35.7833 mL
5 mM	0.7157 mL	3.5783 mL	7.1567 mL
10 mM	0.3578 mL	1.7892 mL	3.5783 mL
50 mM	0.0716 mL	0.3578 mL	0.7157 mL

Please select the appropriate solvent to prepare the stock solution, according to the solubility of the product in different solvents. Please use it as soon as possible.

Note: The dilution table applies only to solid products. For liquid products, please calculate the stock solution based on the stated concentration and/or density.

Reference

Farrell, E.K., Chen, Y., Barazanji, M., et al. Primary fatty acid amide metabolism: Conversion of fatty acids and an ethanolamine in N18TG2 and SCP cells. *J. Lipid. Res.* 53(2), 247-256 (2012).

Yamamoto, S., Takehara, M., and Ushimaru, M. Inhibitory action of linoleamide and oleamide toward sarco/endoplasmic reticulum Ca²⁺-ATPase. *Biochim. Biophys. Acta* 1861(1 Pt A), 3399-3405 (2016).

Inhibitor · Natural Compounds · Compound Libraries · Recombinant Proteins

This product is for Research Use Only · Not for Human or Veterinary or Therapeutic Use

Tel:781-999-4286 E_mail:info@targetmol.com Address:34 Washington Street,Wellesley Hills,MA 02481