

CEP-11981

## Chemical Properties

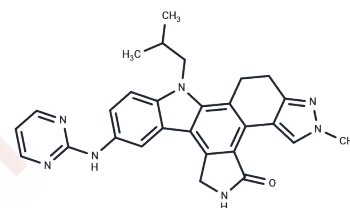
CAS No. : 856691-93-5

Formula: C<sub>28</sub>H<sub>27</sub>N<sub>7</sub>O

Molecular Weight: 477.56

Storage: Powder: -20°C for 3 years | In solvent: -80°C for 1 year

Actual storage temperature shall be subject to the COA.



## Biological Description

Description	CEP-11981 is an orally active TIE2/pan-VEGFR inhibitor with broad tyrosine kinase inhibitory activity, exhibiting antitumour and anti-angiogenic effects, and is applicable for the treatment of refractory solid tumours.
Targets(IC50)	FGFR,Tie-2,VEGFR
In vivo	Calcium channel-modulator-1 (20 mg/kg ; p.o.) causes a 35-37% decrease in systolic blood pressure in spontaneously hypertensive rats. However, iv administration of Calcium channel-modulator-1 to anesthetized spontaneously hypertensive rats causes a decrease in blood pressure.[1]

## Preparing Stock Solutions

	1mg	5mg	10mg
1 mM	2.094 mL	10.4699 mL	20.9398 mL
5 mM	0.4188 mL	2.094 mL	4.188 mL
10 mM	0.2094 mL	1.047 mL	2.094 mL
50 mM	0.0419 mL	0.2094 mL	0.4188 mL

Please select the appropriate solvent to prepare the stock solution, according to the solubility of the product in different solvents. Please use it as soon as possible.

Note: The dilution table applies only to solid products. For liquid products, please calculate the stock solution based on the stated concentration and/or density.

## Reference

Qiao Y,et,al. Autophagy Inhibition by Targeting PIKfyve Potentiates Response to Immune Checkpoint Blockade in Prostate Cancer. Nat Cancer. 2021 Sep;2:978-993.

**Inhibitor · Natural Compounds · Compound Libraries · Recombinant Proteins**

This product is for Research Use Only · Not for Human or Veterinary or Therapeutic Use

Tel:781-999-4286 E\_mail:info@targetmol.com Address:34 Washington Street,Wellesley Hills,MA 02481