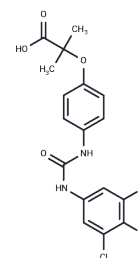


L 345

Chemical Properties

CAS No. : 121809-82-3
 Formula: C₁₇H₁₅Cl₃N₂O₄
 Molecular Weight: 417.67
 Storage: Powder: -20°C for 3 years | In solvent: -80°C for 1 year
 Actual storage temperature shall be subject to the COA.



Biological Description

Description	L 345 is a bioactive chemical.
Targets(IC50)	Others

Preparing Stock Solutions

	1mg	5mg	10mg
1 mM	2.3942 mL	11.9712 mL	23.9423 mL
5 mM	0.4788 mL	2.3942 mL	4.7885 mL
10 mM	0.2394 mL	1.1971 mL	2.3942 mL
50 mM	0.0479 mL	0.2394 mL	0.4788 mL

Please select the appropriate solvent to prepare the stock solution, according to the solubility of the product in different solvents. Please use it as soon as possible.

Note: The dilution table applies only to solid products. For liquid products, please calculate the stock solution based on the stated concentration and/or density.

Reference

Horjen AW, Seljeflot I, Berge T, Smith P, Arnesen H, Tveit A. Effect of sinus rhythm restoration on markers of thrombin generation in atrial fibrillation. *Thromb J.* 2017 Dec 28;15:30. doi: 10.1186/s12959-017-0153-1. eCollection 2017. PubMed PMID: 29299030; PubMed Central PMCID: PMC5745972.

Riddle MC. Diabetes: Controlling glucose levels in elderly people--benefits versus risks. *Nat Rev Endocrinol.* 2015 May;11(5):257-8. doi: 10.1038/nrendo.2015.23. Epub 2015 Feb 24. PubMed PMID: 25707784.

Bi XY, Zhao JJ, Yan T, Li C, Zhou HT, Huang Z, Zhao H, Cai JQ. [Peri-operative treatment for hepatocellular carcinoma patients complied with cirrhosis and hypersplenism]. *Zhonghua Wai Ke Za Zhi.* 2010 Oct 15;48(20):1539-41. Chinese. PubMed PMID: 21176666.

Riddle MC. Therapy: What evidence should guide the use of thiazolidinediones? *Nat Rev Endocrinol.* 2010 Nov;6(11):600-2. doi: 10.1038/nrendo.2010.156. PubMed PMID: 20962864.

Inhibitor · Natural Compounds · Compound Libraries · Recombinant Proteins

This product is for Research Use Only · Not for Human or Veterinary or Therapeutic Use

Tel:781-999-4286 E_mail:info@targetmol.com Address:34 Washington Street,Wellesley Hills,MA 02481