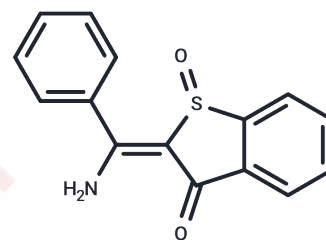


AF-CX 1325

## Chemical Properties

CAS No. : 88708-96-7  
 Formula: C<sub>15</sub>H<sub>11</sub>NO<sub>2</sub>S  
 Molecular Weight: 269.32  
 Storage: Powder: -20°C for 3 years | In solvent: -80°C for 1 year  
 Actual storage temperature shall be subject to the COA.



## Biological Description

Description	AF-CX 1325 is an antidepressant agent.
Targets(IC50)	Others

## Preparing Stock Solutions

	1mg	5mg	10mg
1 mM	3.7131 mL	18.5653 mL	37.1306 mL
5 mM	0.7426 mL	3.7131 mL	7.4261 mL
10 mM	0.3713 mL	1.8565 mL	3.7131 mL
50 mM	0.0743 mL	0.3713 mL	0.7426 mL

Please select the appropriate solvent to prepare the stock solution, according to the solubility of the product in different solvents. Please use it as soon as possible.

Note: The dilution table applies only to solid products. For liquid products, please calculate the stock solution based on the stated concentration and/or density.

## Reference

- Schneider P. Drug-induced lysosomal disorders in laboratory animals: new substances acting on lysosomes. Arch Toxicol. 1992;66(1):23-33. PubMed PMID: 1349805.
- Majkowski J, Danneberg P, Knappen F, Sersen EA. Differences in antiepileptic drug efficacy in hippocampally kindled normal and microcephalic rats. Brain Res. 1986 Oct 29;386(1-2):325-31. PubMed PMID: 3779413.
- Majkowski J, Danneberg P, Knappen F. Effects of carbamazepine, AF-CX 921, and AF-CX 1325 on epileptic discharges and seizures in hippocampally kindled rats. Epilepsia. 1986 Jul-Aug;27(4):391-8. PubMed PMID: 3720698.

**Inhibitor · Natural Compounds · Compound Libraries · Recombinant Proteins**

This product is for Research Use Only · Not for Human or Veterinary or Therapeutic Use

Tel:781-999-4286 E\_mail:info@targetmol.com Address:34 Washington Street,Wellesley Hills,MA 02481