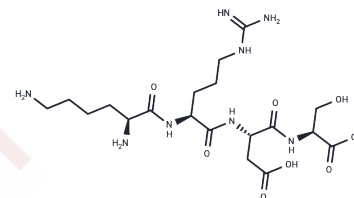


Krd peptide

Chemical Properties

CAS No. :	116430-80-9
Formula:	C ₁₉ H ₃₆ N ₈ O ₈
Molecular Weight:	504.54
Storage:	Keep away from moisture Powder: -20°C for 3 years In solvent: -80°C for 1 year <small>Actual storage temperature shall be subject to the COA.</small>



Biological Description

Description	Krds peptide is a synthetic tetrapeptide derived from lactotransferrin (residues 39 to 42) that suppresses binding of monoclonal antibody against glycoprotein IIb-IIIa on ADP-Stimulated platelets and megakaryocytes.
-------------	---

Preparing Stock Solutions

	1mg	5mg	10mg
1 mM	1.982 mL	9.910 mL	19.820 mL
5 mM	0.3964 mL	1.982 mL	3.964 mL
10 mM	0.1982 mL	0.991 mL	1.982 mL
50 mM	0.0396 mL	0.1982 mL	0.3964 mL

Please select the appropriate solvent to prepare the stock solution, according to the solubility of the product in different solvents. Please use it as soon as possible.

Note: The dilution table applies only to solid products. For liquid products, please calculate the stock solution based on the stated concentration and/or density.

Reference

- Lévy-Toledano S, Grelac F, Caen JP, Maclouf J. KRDS, a peptide derived from human lactotransferrin, inhibits thrombin-induced thromboxane synthesis by a cyclooxygenase-independent mechanism. *Thromb Haemost.* 1995 May;73(5):857-61. PubMed PMID: 7482416.
- Mazoyer E, Lévy-Toledano S, Rendu F, Hermant L, Lu H, Fiat AM, Jollès P, Caen J. KRDS, a new peptide derived from human lactotransferrin, inhibits platelet aggregation and release reaction. *Eur J Biochem.* 1990 Nov 26;194(1):43-9. PubMed PMID: 2174781.
- Wu G, Ruan C, Drouet L, Caen J. Inhibition effects of KRDS, a peptide derived from lactotransferrin, on platelet function and arterial thrombus formation in dogs. *Haemostasis.* 1992;22(1):1-6. PubMed PMID: 1381697.
- Drouet L, Bal dit Sollier C, Cisse M, Pignaud G, Mazoyer E, Fiat AM, Jolles P, Caen JP. The antithrombotic effect of KRDS, a lactotransferrin peptide, compared with RGDS. *Nouv Rev Fr Hematol.* 1990;32(1):59-62. PubMed PMID: 2349083.

Inhibitor · Natural Compounds · Compound Libraries · Recombinant Proteins

This product is for Research Use Only · Not for Human or Veterinary or Therapeutic Use

Tel:781-999-4286 E_mail:info@targetmol.com Address:34 Washington Street,Wellesley Hills,MA 02481