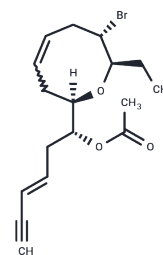


Laurencin

Chemical Properties

CAS No. :	3442-58-8
Formula:	C ₁₇ H ₂₃ BrO ₃
Molecular Weight:	355.27
Storage:	Powder: -20°C for 3 years In solvent: -80°C for 1 year Actual storage temperature shall be subject to the COA.



Biological Description

Description	Laurencin is a component of the sea hare, <i>Aplysia dactylomela</i> .
Targets(IC50)	Others, Drug Metabolite

Preparing Stock Solutions

	1mg	5mg	10mg
1 mM	2.8148 mL	14.0738 mL	28.1476 mL
5 mM	0.563 mL	2.8148 mL	5.6295 mL
10 mM	0.2815 mL	1.4074 mL	2.8148 mL
50 mM	0.0563 mL	0.2815 mL	0.563 mL

Please select the appropriate solvent to prepare the stock solution, according to the solubility of the product in different solvents. Please use it as soon as possible.

Note: The dilution table applies only to solid products. For liquid products, please calculate the stock solution based on the stated concentration and/or density.

Reference

- Yoshikawa K, Otsu M, Ito T, Asakawa Y, Kawano S, Hashimoto T. Aromatic constituents of *Cymbidium Great Flower Marie* Laurencin and their antioxidative activity. *J Nat Med*. 2013 Jan;67(1):217-21. doi: 10.1007/s11418-012-0653-z. Epub 2012 Mar 17. PubMed PMID: 22427197.
- Suzuki M, Takahashi Y, Nakano S, Abe T, Masuda M, Ohnishi T, Noya Y, Seki K. An experimental approach to study the biosynthesis of brominated metabolites by the red algal genus *Laurencia*. *Phytochemistry*. 2009 Jul-Aug;70(11-12):1410-5. doi: 10.1016/j.phytochem.2009.07.038. Epub 2009 Sep 4. PubMed PMID: 19733868.
- Adsool VA, Pansare SV. An enantioselective approach to (+)-laurencin. *Org Biomol Chem*. 2008 Jun 7;6(11):2011-5. doi: 10.1039/b803973a. Epub 2008 Apr 11. PubMed PMID: 18480916.
- Li J, Suh JM, Chin E. Expedient enantioselective synthesis of the δ^4 -oxocene cores of (+)-laurencin and (+)-prelaureatin ($\#$). *Org Lett*. 2010 Nov 5;12(21):4712-5. doi: 10.1021/ol1021965. PubMed PMID: 20919723.

Inhibitor · Natural Compounds · Compound Libraries · Recombinant Proteins

This product is for Research Use Only · Not for Human or Veterinary or Therapeutic Use

Tel:781-999-4286 E_mail:info@targetmol.com Address:34 Washington Street,Wellesley Hills,MA 02481