

Bis(2-chloroethyl)amine hydrochloride

Chemical Properties

CAS No. : 821-48-7

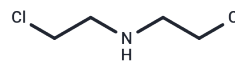
Formula: C₄H₉Cl₂N·HCl

Molecular Weight: 178.49

Storage: Powder: -20°C for 3 years | In solvent: -80°C for 1 year

Actual storage temperature shall be subject to the COA.

HCl



Biological Description

Description	Bis(2-chloroethyl)amine hydrochloride is used as pharmaceutical intermediate.
Targets(IC50)	Others

Solubility Information

Solubility	DMSO: 50 mg/mL (280.13 mM),Sonication is recommended. (< 1 mg/ml refers to the product slightly soluble or insoluble)
------------	--

Preparing Stock Solutions

	1mg	5mg	10mg
1 mM	5.6026 mL	28.0128 mL	56.0255 mL
5 mM	1.1205 mL	5.6026 mL	11.2051 mL
10 mM	0.5603 mL	2.8013 mL	5.6026 mL
50 mM	0.1121 mL	0.5603 mL	1.1205 mL

Please select the appropriate solvent to prepare the stock solution, according to the solubility of the product in different solvents. Please use it as soon as possible.

Note: The dilution table applies only to solid products. For liquid products, please calculate the stock solution based on the stated concentration and/or density.

Reference

HUNT CC, PHILIPS FS. J Pharmacol Exp Ther. 1949 Feb;95(2):131-44.

Inhibitor · Natural Compounds · Compound Libraries · Recombinant Proteins

This product is for Research Use Only · Not for Human or Veterinary or Therapeutic Use

Tel:781-999-4286 E_mail:info@targetmol.com Address:34 Washington Street,Wellesley Hills,MA 02481