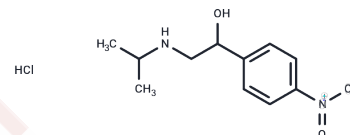


nifenalol.HCl

## Chemical Properties

CAS No. : 5704-60-9  
 Formula: C<sub>11</sub>H<sub>17</sub>ClN<sub>2</sub>O<sub>3</sub>  
 Molecular Weight: 260.72  
 Storage: Powder: -20°C for 3 years | In solvent: -80°C for 1 year  
 Actual storage temperature shall be subject to the COA.



## Biological Description

Description	Nifenalol.HCl(INPEA) is a antagonist of $\beta$ -adrenergic receptor.
Targets(IC50)	Adrenergic Receptor

## Solubility Information

Solubility	DMSO: 25 mg/mL (95.89 mM),Sonication is recommended. (< 1 mg/ml refers to the product slightly soluble or insoluble)
------------	---

## Preparing Stock Solutions

	1mg	5mg	10mg
1 mM	3.8355 mL	19.1777 mL	38.3553 mL
5 mM	0.7671 mL	3.8355 mL	7.6711 mL
10 mM	0.3836 mL	1.9178 mL	3.8355 mL
50 mM	0.0767 mL	0.3836 mL	0.7671 mL

Please select the appropriate solvent to prepare the stock solution, according to the solubility of the product in different solvents. Please use it as soon as possible.

Note: The dilution table applies only to solid products. For liquid products, please calculate the stock solution based on the stated concentration and/or density.

## Reference

Lemmensgruber R , Zilberszac A , Heistracher P . Arrhythmogenic effect of beta-adrenoceptor-blocking drugs in Purkinje fibres of guinea-pig hearts.[J]. Archives Internationales De Pharmacodynamie Et De Therapie, 1996, 331 (1):46-58.

Rabast U , Kasper H , Schönborn J , et al. [Blood glucose concentration and insulin activity in serum after administration of the beta receptor blockader nifenalol-HCl (INPEA). Studies in metabolically healthy people and diabetics].[J]. Therapie Der Gegenwart, 1977, 116(6):1162-74.

**Inhibitor · Natural Compounds · Compound Libraries · Recombinant Proteins**

This product is for Research Use Only · Not for Human or Veterinary or Therapeutic Use

Tel:781-999-4286 E\_mail:info@targetmol.com Address:34 Washington Street,Wellesley Hills,MA 02481