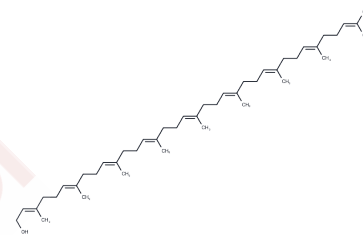


Solanesol

Chemical Properties

CAS No. :	13190-97-1
Formula:	C45H74O
Molecular Weight:	631.07
Storage:	Powder: -20°C for 3 years In solvent: -80°C for 1 year Actual storage temperature shall be subject to the COA.



Biological Description

Description	Solanesol (Betulanonaprenol) is a phytochemical present in tobacco leaf. Starting material for synthesis of co-enzyme Q10. Exhibits antiulcer activity.
Targets(IC50)	Apoptosis,HSP,Akt,Caspase,Endogenous Metabolite,Antibacterial,p38 MAPK,PARP,ROS

Solubility Information

Solubility	DMSO: Slightly soluble, (< 1 mg/ml refers to the product slightly soluble or insoluble)
------------	--

Preparing Stock Solutions

	1mg	5mg	10mg
1 mM	1.5846 mL	7.9231 mL	15.8461 mL
5 mM	0.3169 mL	1.5846 mL	3.1692 mL
10 mM	0.1585 mL	0.7923 mL	1.5846 mL
50 mM	0.0317 mL	0.1585 mL	0.3169 mL

Please select the appropriate solvent to prepare the stock solution, according to the solubility of the product in different solvents. Please use it as soon as possible.

Note: The dilution table applies only to solid products. For liquid products, please calculate the stock solution based on the stated concentration and/or density.

Reference

Yao X, et al. Solanesol induces the expression of heme oxygenase-1 via p38 and Akt and suppresses the production of proinflammatory cytokines in RAW264.7 cells. Food Funct. 2017 Jan 25;8(1):132-141.

Inhibitor · Natural Compounds · Compound Libraries · Recombinant Proteins

This product is for Research Use Only · Not for Human or Veterinary or Therapeutic Use

Tel:781-999-4286 E_mail:info@targetmol.com Address:34 Washington Street,Wellesley Hills,MA 02481