

PPI-2458

Chemical Properties

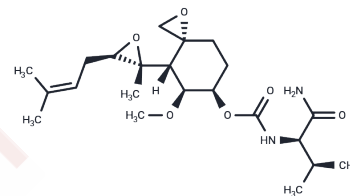
CAS No. : 431077-35-9

Formula: C₂₂H₃₆N₂O₆

Molecular Weight: 424.53

Storage: Powder: -20°C for 3 years | In solvent: -80°C for 1 year

Actual storage temperature shall be subject to the COA.



Biological Description

Description	PPI-2458 is a synthetic derivative of fumagillin with antineoplastic and cytotoxic properties. PPI-2458 irreversibly inhibits the enzyme methionine aminopeptidase type 2 (MetAP2), thereby preventing abnormal cell growth and angiogenesis. PPI-2458 is reported to have a better toxicity profile compared to other agents of its class.
Targets(IC50)	Others,Aminopeptidase

Preparing Stock Solutions

	1mg	5mg	10mg
1 mM	2.3555 mL	11.7777 mL	23.5555 mL
5 mM	0.4711 mL	2.3555 mL	4.7111 mL
10 mM	0.2356 mL	1.1778 mL	2.3555 mL
50 mM	0.0471 mL	0.2356 mL	0.4711 mL

Please select the appropriate solvent to prepare the stock solution, according to the solubility of the product in different solvents. Please use it as soon as possible.

Note: The dilution table applies only to solid products. For liquid products, please calculate the stock solution based on the stated concentration and/or density.

Inhibitor · Natural Compounds · Compound Libraries · Recombinant Proteins

This product is for Research Use Only · Not for Human or Veterinary or Therapeutic Use

Tel:781-999-4286

E_mail:info@targetmol.com

Address:34 Washington Street,Wellesley Hills,MA 02481