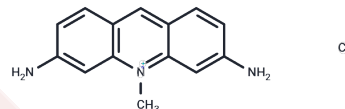


## Acriflavine Hydrochloride

## Chemical Properties

CAS No. :	8063-24-9
Formula:	C <sub>14</sub> H <sub>14</sub> ClN <sub>3</sub>
Molecular Weight:	259.73
Storage:	Powder: -20°C for 3 years   In solvent: -80°C for 1 year Actual storage temperature shall be subject to the COA.



## Biological Description

Description	Acriflavine Hydrochloride (Acriflavine HCl) is a HIF-1 $\alpha$ inhibitor. It acts by targeting HIF-1 $\alpha$ -mediated pathways and decreasing the level of PGK1, VEGF, and HIF-1 $\alpha$ in vitro and in vivo.
Targets(IC50)	HIF/HIF Prolyl-Hydroxylase, Antibacterial, HIF, Antifungal, Monocarboxylate transporter, SARS-CoV, PGK1

## Solubility Information

Solubility	DMSO: 41.67 mg/mL (160.44 mM), Sonication is recommended. ( $< 1$ mg/ml refers to the product slightly soluble or insoluble)
------------	---

## Preparing Stock Solutions

	1mg	5mg	10mg
1 mM	3.8502 mL	19.2508 mL	38.5015 mL
5 mM	0.770 mL	3.8502 mL	7.7003 mL
10 mM	0.385 mL	1.9251 mL	3.8502 mL
50 mM	0.077 mL	0.385 mL	0.770 mL

Please select the appropriate solvent to prepare the stock solution, according to the solubility of the product in different solvents. Please use it as soon as possible.

Note: The dilution table applies only to solid products. For liquid products, please calculate the stock solution based on the stated concentration and/or density.

### Reference

Deus D, Krschek C, Pfeifer Y, Sharifi AR, Fiegen U, Reich F, Klein G, Kehrenberg C. Comparative analysis of the susceptibility to biocides and heavy metals of extended-spectrum  $\beta$ -lactamase-producing *Escherichia coli* isolates of human and avian origin, Germany. *Diagn Microbiol Infect Dis*. 2017 May;88(1):88-92. doi: 10.1016/j.diagmicrobio.2017.01.023. Epub 2017 Feb 8. PubMed PMID: 28256291.

Li C, Wei Y, Wang P, et al. Screening and Identification of Hypoxia-Inducible Factor Signaling Inhibitor with Antiangiogenic Activity. *Pharmaceutical Fronts*. 2024

Keys AL, Hitchins AD, Smiley RD. Contribution of Selective Conditions to Microbial Competition in Four *Listeria* Selective Enrichment Formulations. *J Food Prot*. 2016 Nov;79(11):1904-1910. doi: 10.4315/0362-028X.JFP-16-216. PubMed PMID: 28221922; PubMed Central PMCID: PMC5510592.

Chang TP, Leff DR, Shousha S, Hadjiminias DJ, Ramakrishnan R, Hughes MR, Yang GZ, Darzi A. Imaging breast cancer morphology using probe-based confocal laser endomicroscopy: towards a real-time intraoperative imaging tool for cavity scanning. *Breast Cancer Res Treat*. 2015 Sep;153(2):299-310. doi: 10.1007/s10549-015-3543-8. Epub 2015 Aug 18. PubMed PMID: 26283299.

Manivannan C, Meenakshi Sundaram K, Sundararaman M, Renganathan R. Investigation on the inclusion and toxicity of acriflavine with cyclodextrins: a spectroscopic approach. *Spectrochim Acta A Mol Biomol Spectrosc*. 2014 Mar 25;122:164-70. doi: 10.1016/j.saa.2013.11.012. Epub 2013 Nov 13. PubMed PMID: 24309178.

**Inhibitor · Natural Compounds · Compound Libraries · Recombinant Proteins**

This product is for Research Use Only · Not for Human or Veterinary or Therapeutic Use

Tel: 781-999-4286 E\_mail: info@targetmol.com Address: 34 Washington Street, Wellesley Hills, MA 02481