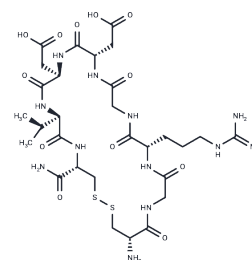


LXW7

Chemical Properties

CAS No. :	1313004-77-1
Formula:	C ₂₉ H ₄₈ N ₁₂ O ₁₂ S ₂
Molecular Weight:	820.89
Storage:	Keep away from moisture Powder: -20°C for 3 years In solvent: -80°C for 1 year <i>Actual storage temperature shall be subject to the COA.</i>



Biological Description

Description	LXW7 is an octamer disulfide cyclic peptide and $\alpha\beta 3$ integrin ligand, acts as a potent and specific endothelial progenitor cells (EPCs) and endothelial cells (ECs) targeting ligand. LXW7 is a disulfide cyclic octa-peptide (cGRGDdvc) containing unnatural amino acids flanking both sides of the main functional motif.
Targets(IC50)	Integrin

Solubility Information

Solubility	H ₂ O: Soluble, (< 1 mg/ml refers to the product slightly soluble or insoluble)
------------	--

Preparing Stock Solutions

	1mg	5mg	10mg
1 mM	1.2182 mL	6.091 mL	12.1819 mL
5 mM	0.2436 mL	1.2182 mL	2.4364 mL
10 mM	0.1218 mL	0.6091 mL	1.2182 mL
50 mM	0.0244 mL	0.1218 mL	0.2436 mL

Please select the appropriate solvent to prepare the stock solution, according to the solubility of the product in different solvents. Please use it as soon as possible.

Note: The dilution table applies only to solid products. For liquid products, please calculate the stock solution based on the stated concentration and/or density.

Reference

Hao D, et al. Discovery and Characterization of a Potent and Specific Peptide Ligand Targeting Endothelial Progenitor Cells and Endothelial Cells for Tissue Regeneration. ACS Chem Biol. 2017 Apr 21;12(4):1075-1086.

Inhibitor · Natural Compounds · Compound Libraries · Recombinant Proteins

This product is for Research Use Only · Not for Human or Veterinary or Therapeutic Use

Tel:781-999-4286 E_mail:info@targetmol.com Address:34 Washington Street,Wellesley Hills,MA 02481