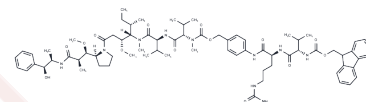


Fmoc-Val-Cit-PAB-MMAE

Chemical Properties

| | |
|-------------------|---|
| CAS No. : | 1350456-56-2 |
| Formula: | C73H104N10O14 |
| Molecular Weight: | 1345.67 |
| Storage: | Keep away from direct sunlight Powder: -20°C for 3 years <small>Actual storage temperature shall be subject to the COA.</small> |



Biological Description

| | |
|---------------|---|
| Description | Fmoc-Val-Cit-PAB-MMAE is consisted of the ADCs linker (Fmoc-Val-Cit-PAB) and potent tubulin inhibitor (MMAE). Fmoc-Val-Cit-PAB-MMAE is a drug-linker conjugate for ADC. |
| Targets(IC50) | Microtubule Associated, Drug-Linker Conjugates for ADC, PROTAC Linker |

Solubility Information

| | |
|---------------------|--|
| Solubility | DMSO: 30 mg/mL (22.29 mM), Sonication is recommended. (< 1 mg/ml refers to the product slightly soluble or insoluble) |
| In vivo Formulation | 10% DMSO+90% Corn Oil: 3.3 mg/mL (2.45 mM), Sonication is recommended. <i>Please add the solvents sequentially, clarifying the solution as much as possible before adding the next one. Dissolve by heating and/or sonication if necessary. Working solution is recommended to be prepared and used immediately. The formulation provided above is for reference purposes only. In vivo formulations may vary and should be modified based on specific experimental conditions.</i> |

Preparing Stock Solutions

| | 1mg | 5mg | 10mg |
|-------|-----------|-----------|-----------|
| 1 mM | 0.7431 mL | 3.7156 mL | 7.4312 mL |
| 5 mM | 0.1486 mL | 0.7431 mL | 1.4862 mL |
| 10 mM | 0.0743 mL | 0.3716 mL | 0.7431 mL |
| 50 mM | 0.0149 mL | 0.0743 mL | 0.1486 mL |

Please select the appropriate solvent to prepare the stock solution, according to the solubility of the product in different solvents. Please use it as soon as possible.

Note: The dilution table applies only to solid products. For liquid products, please calculate the stock solution based on the stated concentration and/or density.

Inhibitor · Natural Compounds · Compound Libraries · Recombinant Proteins

This product is for Research Use Only · Not for Human or Veterinary or Therapeutic Use

Tel:781-999-4286 E_mail:info@targetmol.com Address:34 Washington Street,Wellesley Hills,MA 02481