

## Myelopeptide-2 (MP-2)

## Chemical Properties

CAS No. :

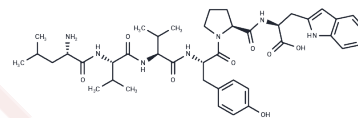
Formula: C41H57N7O8

Molecular Weight: 775.93

Keep away from moisture

Storage: Powder: -20°C for 3 years | In solvent: -80°C for 1 year

Actual storage temperature shall be subject to the COA.



## Biological Description

Description	Myelopeptide-2 (MP-2) with the sequence Leu-Val-Val-Tyr-Pro-Trp is originally isolated from the supernatant of porcine bone marrow cell culture and is able to restore the mitogen responsiveness of human T lymphocytes inhibited by conditioned medium from HL-60 leukemia cells or measles virus.
Targets(IC50)	Others
In vitro	The MP-2 recovery effect is connected with its influence on the CD3 and CD4 antigen expression on T lymphocytes. Research results also suggest that the MP-2 involvement in regulatory processes is directed to the maintenance of immune homeostasis. This peptide is a perspective to be applied in antitumor and antiviral therapy.

## Solubility Information

Solubility	DMSO: $\geq 77.5$ mg/mL, Sonication is recommended. ( $< 1$ mg/ml refers to the product slightly soluble or insoluble)
------------	---

## Preparing Stock Solutions

	1mg	5mg	10mg
1 mM	1.2888 mL	6.4439 mL	12.8878 mL
5 mM	0.2578 mL	1.2888 mL	2.5776 mL
10 mM	0.1289 mL	0.6444 mL	1.2888 mL
50 mM	0.0258 mL	0.1289 mL	0.2578 mL

Please select the appropriate solvent to prepare the stock solution, according to the solubility of the product in different solvents. Please use it as soon as possible.

Note: The dilution table applies only to solid products. For liquid products, please calculate the stock solution based on the stated concentration and/or density.

**Inhibitor · Natural Compounds · Compound Libraries · Recombinant Proteins**

This product is for Research Use Only · Not for Human or Veterinary or Therapeutic Use

Tel:781-999-4286 E\_mail:info@targetmol.com Address:34 Washington Street,Wellesley Hills,MA 02481