

(±)-GC242

Chemical Properties

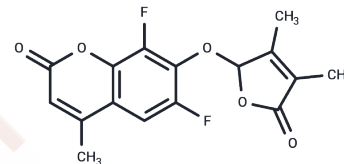
CAS No. :

Formula: C16H12F2O5

Molecular Weight: 322.26

Storage: Powder: -20°C for 3 years | In solvent: -80°C for 1 year

Actual storage temperature shall be subject to the COA.



Biological Description

Description	(±)-GC242 is a profluorescent RAMOSUS3 (RMS3) probe with strigolactone-like biological activity.
Targets(IC50)	Others

Preparing Stock Solutions

	1mg	5mg	10mg
1 mM	3.1031 mL	15.5154 mL	31.0308 mL
5 mM	0.6206 mL	3.1031 mL	6.2062 mL
10 mM	0.3103 mL	1.5515 mL	3.1031 mL
50 mM	0.0621 mL	0.3103 mL	0.6206 mL

Please select the appropriate solvent to prepare the stock solution, according to the solubility of the product in different solvents. Please use it as soon as possible.

Note: The dilution table applies only to solid products. For liquid products, please calculate the stock solution based on the stated concentration and/or density.

Reference

Alexandre de Saint Germain, Guillaume Clavé, Marie-Ange Badet-Denisot, Jean-Paul Pillot, David Cornu, Jean-Pierre Le Caer, Marco Burger, Frank Pelissier, Pascal Retailleau, Colin Turnbull, Sandrine Bonhomme, Joanne Chory, Catherine Rameau, François-Didier Boyer. An histidine covalent receptor and butenolide complex mediates strigolactone perception. *Nature Chemical Biology* 12, 787-794 (2016) doi:10.1038/nchembio.2147

Inhibitor · Natural Compounds · Compound Libraries · Recombinant Proteins

This product is for Research Use Only · Not for Human or Veterinary or Therapeutic Use

Tel:781-999-4286 E_mail:info@targetmol.com Address:34 Washington Street,Wellesley Hills,MA 02481