

Cardol triene

Chemical Properties

CAS No. : 79473-24-8

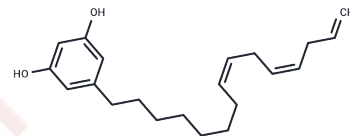
Formula: C₂₁H₃₀O₂

Molecular Weight: 314.46

Store at low temperature

Storage: Powder: -20°C for 3 years | In solvent: -80°C for 1 year

Actual storage temperature shall be subject to the COA.



Biological Description

| | |
|----------------------------|--|
| Description | Cardol triene, a phenolic compound found in cashews, competitively and irreversibly inhibits mushroom tyrosinase (IC ₅₀ =22.5 μM) and exhibits micromolar-level inhibition against Schistosoma mansoni worms. It can be used for synthesizing dibenzoxazines. |
| Targets(IC ₅₀) | Parasite |

Solubility Information

| | |
|------------|---|
| Solubility | Ethanol: 10 mg/mL (31.8 mM), Sonication is recommended. Ethanol: PBS (pH 7.2) (1:1): 0.5 mg/mL (1.59 mM), Sonication is recommended. Ethanol: PBS (pH 7.2) (1:1): < 1 mg/mL (insoluble) DMSO: 8 mg/mL (25.44 mM), Sonication is recommended. DMF: 10 mg/mL (31.8 mM), Sonication is recommended. (< 1 mg/ml refers to the product slightly soluble or insoluble) |
|------------|---|

Preparing Stock Solutions

| | 1mg | 5mg | 10mg |
|-------|-----------|------------|------------|
| 1 mM | 3.1801 mL | 15.9003 mL | 31.8005 mL |
| 5 mM | 0.636 mL | 3.1801 mL | 6.3601 mL |
| 10 mM | 0.318 mL | 1.590 mL | 3.1801 mL |
| 50 mM | 0.0636 mL | 0.318 mL | 0.636 mL |

Please select the appropriate solvent to prepare the stock solution, according to the solubility of the product in different solvents. Please use it as soon as possible.

Note: The dilution table applies only to solid products. For liquid products, please calculate the stock solution based on the stated concentration and/or density.

Reference

Alvarenga TA. Schistosomicidal Activity of Alkyl-phenols from the Cashew *Anacardium occidentale* against *Schistosoma mansoni* Adult Worms. ACS Publications. November 11, 2016.

Inhibitor · Natural Compounds · Compound Libraries · Recombinant Proteins

This product is for Research Use Only · Not for Human or Veterinary or Therapeutic Use

Tel:781-999-4286 E_mail:info@targetmol.com Address:34 Washington Street,Wellesley Hills,MA 02481