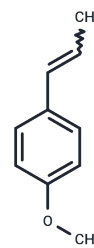


Anethole

Chemical Properties

CAS No. :	104-46-1
Formula:	C ₁₀ H ₁₂ O
Molecular Weight:	148.2
Storage:	Keep away from moisture Powder: -20°C for 3 years In solvent: -80°C for 1 year <small>Actual storage temperature shall be subject to the COA.</small>



Biological Description

Description	Anethole (Anise camphor) is a type of aromatic compound that exists widely in nature, widely utilized as a seasoning substance.
Targets(IC50)	Apoptosis, MMP, Others, NF-κB, Antibacterial, Antifungal

Solubility Information

Solubility	DMSO: 250 mg/mL (1686.91 mM), Sonication is recommended. (< 1 mg/ml refers to the product slightly soluble or insoluble)
In vivo Formulation	10% DMSO+40% PEG300+5% Tween 80+45% Saline: 2 mg/mL (13.5 mM), Sonication is recommended. <i>Please add the solvents sequentially, clarifying the solution as much as possible before adding the next one. Dissolve by heating and/or sonication if necessary. Working solution is recommended to be prepared and used immediately. The formulation provided above is for reference purposes only. In vivo formulations may vary and should be modified based on specific experimental conditions.</i>

Preparing Stock Solutions

	1mg	5mg	10mg
1 mM	6.7476 mL	33.7382 mL	67.4764 mL
5 mM	1.3495 mL	6.7476 mL	13.4953 mL
10 mM	0.6748 mL	3.3738 mL	6.7476 mL
50 mM	0.135 mL	0.6748 mL	1.3495 mL

Please select the appropriate solvent to prepare the stock solution, according to the solubility of the product in different solvents. Please use it as soon as possible.

Note: The dilution table applies only to solid products. For liquid products, please calculate the stock solution based on the stated concentration and/or density.

Reference

Shimoni E, et al. J Biol Chem. 2002 Apr 5;277(14):11866-72.

Inhibitor · Natural Compounds · Compound Libraries · Recombinant Proteins

This product is for Research Use Only · Not for Human or Veterinary or Therapeutic Use

Tel:781-999-4286 E_mail:info@targetmol.com Address:34 Washington Street,Wellesley Hills,MA 02481