

Enkephalin-met, ala(2)-

Chemical Properties

CAS No. : 61370-87-4

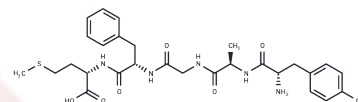
Formula: C₂₈H₃₇N₅O₇S

Molecular Weight: 587.69

Keep away from moisture

Storage: Powder: -20°C for 3 years | In solvent: -80°C for 1 year

Actual storage temperature shall be subject to the COA.



Biological Description

Description	Enkephalin-met, ala(2)- is a synthetic analog of methionine enkephalin.
Targets(IC50)	Opioid Receptor

Preparing Stock Solutions

	1mg	5mg	10mg
1 mM	1.7016 mL	8.5079 mL	17.0158 mL
5 mM	0.3403 mL	1.7016 mL	3.4032 mL
10 mM	0.1702 mL	0.8508 mL	1.7016 mL
50 mM	0.034 mL	0.1702 mL	0.3403 mL

Please select the appropriate solvent to prepare the stock solution, according to the solubility of the product in different solvents. Please use it as soon as possible.

Note: The dilution table applies only to solid products. For liquid products, please calculate the stock solution based on the stated concentration and/or density.

Reference

Kemenes G, Rózsa KS, Stefano G, Carpenter DO. Distinct receptors for Leu- and Met-enkephalin on the metacerebral giant cell of *Aplysia*. *Cell Mol Neurobiol*. 1992 Apr;12(2):107-19. PubMed PMID: 1318164.

Katsuura G, Inouye K, Itoh S, Hsiao S. Analgesic effects of enkephalin analogs in rats. *Life Sci*. 1984 Aug 20;35(8):815-8. PubMed PMID: 6548283.

Haldar J, Hoffman DL, Zimmerman EA. Morphine, beta-endorphin and [D-Ala²] Met-enkephalin inhibit oxytocin release by acetylcholine and suckling. *Peptides*. 1982 Jul-Aug;3(4):663-8. PubMed PMID: 6291011.

Yen MH, Ku PY, Lee HK. The effect of (D-Ala²)-Met-enkephalin on the contraction of nictitating membrane in cats. *Eur J Pharmacol*. 1980 May 2;63(2-3):213-6. PubMed PMID: 7379855.

Inhibitor · Natural Compounds · Compound Libraries · Recombinant Proteins

This product is for Research Use Only · Not for Human or Veterinary or Therapeutic Use

Tel:781-999-4286 E_mail:info@targetmol.com Address:34 Washington Street,Wellesley Hills,MA 02481