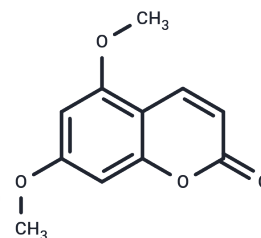


Citropten

Chemical Properties

CAS No. :	487-06-9
Formula:	C ₁₁ H ₁₀ O ₄
Molecular Weight:	206.19
Storage:	Keep away from moisture Powder: -20°C for 3 years In solvent: -80°C for 1 year <small>Actual storage temperature shall be subject to the COA.</small>



Biological Description

Description	Citropten, a coumarin isolated from bergamot oil, has antiproliferative effects on human melanoma cell line A2058.
Targets(IC50)	ERK,Others,JNK,p38 MAPK
Kinase Assay	Assay of protein kinase C (PKC) and cAMP-dependent protein kinase (PKA) activities.: PKC and PKA activities are detected. Briefly, 5 mL of PKC or PKA is mixed with 5 mL of lipid preparation containing 100 mM phorbol 12-myristate 13-acetate, 2.8 mg/mL phosphatidyl serine, and Triton X-100 mixed micelles for PKC assay or 5 mL of 40 mM cAMP in 50 mM Tris-HCl, pH 7.5, for PKA assay, and 5 mL of daphnetin. The reaction is started by adding 10 mL of PKC substrate solution containing 250 mM acetylated myelin basic protein, 100 mM ATP, 5 mM CaCl ₂ , 10 mM MgCl ₂ , 20 mM Tris-HCl, pH 7.5, or 10 mL of PKA substrate solution containing 200 mM Kemptide, 400 mM ATP, 40 mM MgCl ₂ , 1 mg/mL BSA, 50 mM Tris-HCl, pH 7.5, and 20-25 mCi/mL [γ- ³² P] ATP. After incubation at 25 °C for 5 minutes, 20 mL of each mixture is spotted on a piece of phosphocellulose disc which is immediately put into 1% H ₃ PO ₄ . After free [γ- ³² P] ATP on the discs is removed, the peptide-incorporated ³² P on the discs is counted in a scintillation counter.

Solubility Information

Solubility	DMSO: 5 mg/mL (24.25 mM),Sonication is recommended. (< 1 mg/ml refers to the product slightly soluble or insoluble)
------------	--

Preparing Stock Solutions

	1mg	5mg	10mg
1 mM	4.8499 mL	24.2495 mL	48.499 mL
5 mM	0.970 mL	4.8499 mL	9.6998 mL
10 mM	0.485 mL	2.4249 mL	4.8499 mL
50 mM	0.097 mL	0.485 mL	0.970 mL

Please select the appropriate solvent to prepare the stock solution, according to the solubility of the product in different solvents. Please use it as soon as possible.

Note: The dilution table applies only to solid products. For liquid products, please calculate the stock solution based on the stated concentration and/or density.

Reference

Zdybel M, et al. Acta Pol Pharm. 2014 Nov-Dec;71(6):1066-72.

Inhibitor · Natural Compounds · Compound Libraries · Recombinant Proteins

This product is for Research Use Only · Not for Human or Veterinary or Therapeutic Use

Tel: 781-999-4286 E_mail: info@targetmol.com Address: 34 Washington Street, Wellesley Hills, MA 02481