

Methysergide maleate

Chemical Properties

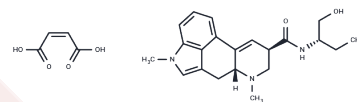
CAS No. : 129-49-7

Formula: C₂₅H₃₁N₃O₆

Molecular Weight: 469.54

Storage: Powder: -20°C for 3 years | In solvent: -80°C for 1 year

Actual storage temperature shall be subject to the COA.



Biological Description

Description	Methysergide is used for prophylaxis of migraine headaches/cluster headaches but is no longer recommended due to retroplmonary/retroperitoneal fibrosis. It may also be used in the treatment of serotonin syndrome. It is also used in carcinoid syndrome to treat severe diarrhea.
Targets(IC50)	Others

Solubility Information

Solubility	DMSO: Soluble, H ₂ O: Insoluble, (< 1 mg/ml refers to the product slightly soluble or insoluble)
------------	--

Preparing Stock Solutions

	1mg	5mg	10mg
1 mM	2.1297 mL	10.6487 mL	21.2974 mL
5 mM	0.4259 mL	2.1297 mL	4.2595 mL
10 mM	0.213 mL	1.0649 mL	2.1297 mL
50 mM	0.0426 mL	0.213 mL	0.4259 mL

Please select the appropriate solvent to prepare the stock solution, according to the solubility of the product in different solvents. Please use it as soon as possible.

Note: The dilution table applies only to solid products. For liquid products, please calculate the stock solution based on the stated concentration and/or density.

Reference

Valic M, Pecotic R, Pavlinac Dodig I, Valic Z, Stipica I, Dogas Z. Intermittent hypercapnia-induced phrenic long-term depression is revealed after serotonin receptor blockade with methysergide in anaesthetized rats. *Exp Physiol*. 2016 Feb 1;101(2):319-31. doi: 10.1113/EP085161. Epub 2015 Dec 20. PubMed PMID: 26621042.

David RB, Roncari CF, Lauar MR, Vendramini RC, Antunes-Rodrigues J, Menani JV, De Luca LA Jr. Sodium intake, brain c-Fos protein and gastric emptying in cell-dehydrated rats treated with methysergide into the lateral parabrachial nucleus. *Physiol Behav*. 2015 Nov 1;151:111-20. doi: 10.1016/j.physbeh.2015.07.014. Epub 2015 Jul 11. PubMed PMID: 26171591.

Andréjak M, Szymanski C, Maréchaux S, Arnalsteen E, Gras V, Rémedi JP, Tribouilloy C. Valvular heart disease associated with long-term treatment by methysergide: a case report. *Thérapie*. 2014 May-Jun;69(3):255-7. doi: 10.2515/therapie/2014030. Epub 2014 Jun 18. PubMed PMID: 24934823.

Matsuta Y, Schwen Z, Mally AD, Shen B, Wang J, Roppolo JR, de Groat WC, Tai C. Effect of methysergide on pudendal inhibition of micturition reflex in cats. *Exp Neurol*. 2013 Sep;247:250-8. doi: 10.1016/j.expneurol.2013.05.006. Epub 2013 May 18. PubMed PMID: 23688680; PubMed Central PMCID: PMC3742625.

Inhibitor · Natural Compounds · Compound Libraries · Recombinant Proteins

This product is for Research Use Only · Not for Human or Veterinary or Therapeutic Use

Tel:781-999-4286 E_mail:info@targetmol.com Address:34 Washington Street,Wellesley Hills,MA 02481