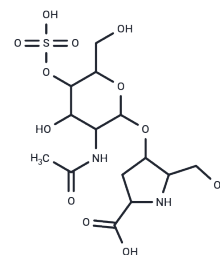


Bulgecin C

Chemical Properties

CAS No. :	92953-56-5
Formula:	C ₁₄ H ₂₄ N ₂ O ₁₂ S
Molecular Weight:	444.41
Storage:	Powder: -20°C for 3 years In solvent: -80°C for 1 year Actual storage temperature shall be subject to the COA.



Biological Description

Description	Bulgecin C is an O-sulfonated glycopeptides that can enhance the antibacterial activity of beta-lactam antibiotics.
Targets(IC50)	Others

Preparing Stock Solutions

	1mg	5mg	10mg
1 mM	2.2502 mL	11.2509 mL	22.5017 mL
5 mM	0.450 mL	2.2502 mL	4.5003 mL
10 mM	0.225 mL	1.1251 mL	2.2502 mL
50 mM	0.045 mL	0.225 mL	0.450 mL

Please select the appropriate solvent to prepare the stock solution, according to the solubility of the product in different solvents. Please use it as soon as possible.

Note: The dilution table applies only to solid products. For liquid products, please calculate the stock solution based on the stated concentration and/or density.

Reference

- Thunnissen AM, Rozeboom HJ, Kalk KH, Dijkstra BW. Structure of the 70-kDa soluble lytic transglycosylase complexed with bulgecin A. Implications for the enzymatic mechanism. *Biochemistry*. 1995 Oct 3;34(39):12729-37. PubMed PMID: 7548026.
- Karlsen S, Hough E. Structure of a complex between bulgecin, a bacterial metabolite, and lysozyme from the rainbow trout. *Acta Crystallogr D Biol Crystallogr*. 1996 Jan 1;52(Pt 1):115-23. PubMed PMID: 15299732.
- Karlsen S, Hough E, Rao ZH, Isaacs NW. Structure of a bulgecin-inhibited g-type lysozyme from the egg white of the Australian black swan. A comparison of the binding of bulgecin to three muramidases. *Acta Crystallogr D Biol Crystallogr*. 1996 Jan 1;52(Pt 1):105-14. PubMed PMID: 15299731.
- Fibriansah G, Gliubich FI, Thunnissen AM. On the mechanism of peptidoglycan binding and cleavage by the endo-specific lytic transglycosylase MltE from *Escherichia coli*. *Biochemistry*. 2012 Nov 13;51(45):9164-77. doi: 10.1021/bi300900t. Epub 2012 Oct 30. PubMed PMID: 23075328.

Inhibitor · Natural Compounds · Compound Libraries · Recombinant Proteins

This product is for Research Use Only · Not for Human or Veterinary or Therapeutic Use

Tel:781-999-4286 E_mail:info@targetmol.com Address:34 Washington Street,Wellesley Hills,MA 02481