

## Importazole HCl

## Chemical Properties

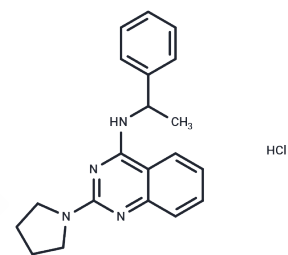
CAS No. :

Formula: C<sub>20</sub>H<sub>23</sub>ClN<sub>4</sub>

Molecular Weight: 354.88

Storage: Powder: -20°C for 3 years | In solvent: -80°C for 1 year

Actual storage temperature shall be subject to the COA.



## Biological Description

Description	Importazole HCl (662163-81-7 free base) is a reversible, cell-permeable inhibitor of the nuclear transport receptor importin- $\beta$ . It blocks the nuclear translocation of activated T-cell nuclear factor (NFAT-GFP) in HEK293 cells.
Targets(IC50)	Apoptosis

## Preparing Stock Solutions

	1mg	5mg	10mg
1 mM	2.8179 mL	14.0893 mL	28.1785 mL
5 mM	0.5636 mL	2.8179 mL	5.6357 mL
10 mM	0.2818 mL	1.4089 mL	2.8179 mL
50 mM	0.0564 mL	0.2818 mL	0.5636 mL

Please select the appropriate solvent to prepare the stock solution, according to the solubility of the product in different solvents. Please use it as soon as possible.

Note: The dilution table applies only to solid products. For liquid products, please calculate the stock solution based on the stated concentration and/or density.

## Reference

Soderholm JF, et al. Importazole, a small molecule inhibitor of the transport receptor importin- $\beta$ . ACS Chem Biol. 2011;6(7):700-708.

Mojica SA, et al. SINC, a type III secreted protein of Chlamydia psittaci, targets the inner nuclear membrane of infected cells and uninfected neighbors. Mol Biol Cell. 2015;26(10):1918-1934.

Yan W, et al. Importin  $\beta$ 1 mediates nuclear factor- $\kappa$ B signal transduction into the nuclei of myeloma cells and affects their proliferation and apoptosis. Cell Signal. 2015;27(4):851-859.

Bird SL, et al. RanGTP and CLASP1 cooperate to position the mitotic spindle. Mol Biol Cell. 2013;24(16):2506-2514.

**Inhibitor · Natural Compounds · Compound Libraries · Recombinant Proteins**

This product is for Research Use Only · Not for Human or Veterinary or Therapeutic Use

Tel:781-999-4286 E\_mail:info@targetmol.com Address:34 Washington Street,Wellesley Hills,MA 02481