

(R)-SCH 42495

## Chemical Properties

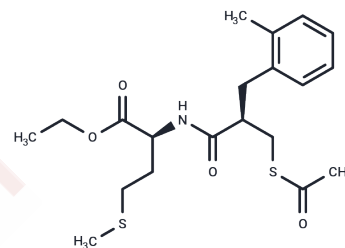
CAS No. : 156792-25-5

Formula: C<sub>20</sub>H<sub>29</sub>NO<sub>4</sub>S<sub>2</sub>

Molecular Weight: 411.58

Storage: Powder: -20°C for 3 years | In solvent: -80°C for 1 year

Actual storage temperature shall be subject to the COA.



## Biological Description

Description	(R)-SCH 42495, the less active enantiomer of SCH 42495, is an orally active inhibitor of neutral metalloendopeptidase (NEP) with antihypertensive effects.
Targets(IC50)	Neprilysin,Others
In vitro	NEP is a critical enzyme in the degradation. NEP cleaves atrial natriuretic factors (ANF) in vitro[1].

## Preparing Stock Solutions

	1mg	5mg	10mg
1 mM	2.4297 mL	12.1483 mL	24.2966 mL
5 mM	0.4859 mL	2.4297 mL	4.8593 mL
10 mM	0.243 mL	1.2148 mL	2.4297 mL
50 mM	0.0486 mL	0.243 mL	0.4859 mL

Please select the appropriate solvent to prepare the stock solution, according to the solubility of the product in different solvents. Please use it as soon as possible.

Note: The dilution table applies only to solid products. For liquid products, please calculate the stock solution based on the stated concentration and/or density.

## Reference

Neustadt BR, et al. Mercaptoacyl amino acid inhibitors of atriopeptidase. 1. Structure-activity relationship studies of methionine and S-alkylcysteine derivatives. J Med Chem. 1994 Jul 22;37(15):2461-76.

Watkins RW, et al. Atrial natriuretic factor potentiating and hemodynamic effects of SCH 42495, a new, neutral metalloendopeptidase inhibitor. Am J Hypertens. 1993 May;6(5 Pt 1):357-68.

**Inhibitor · Natural Compounds · Compound Libraries · Recombinant Proteins**

This product is for Research Use Only · Not for Human or Veterinary or Therapeutic Use

Tel:781-999-4286

E\_mail:info@targetmol.com

Address:34 Washington Street,Wellesley Hills,MA 02481