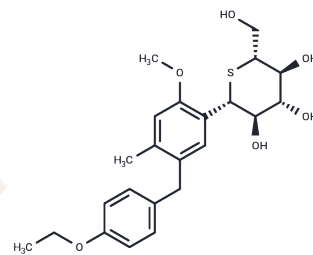


Luseogliflozin

Chemical Properties

CAS No. :	898537-18-3
Formula:	C ₂₃ H ₃₀ O ₆ S
Molecular Weight:	434.55
Storage:	Powder: -20°C for 3 years In solvent: -80°C for 1 year Actual storage temperature shall be subject to the COA.



Biological Description

Description	Luseogliflozin, a potent and competitive inhibitor of sodium-dependent glucose cotransporter 2 (SGLT2), competitively inhibits human SGLT2-mediated glucose uptake with a K_i value of 1.10 nM.
Targets(IC50)	Others,SGLT

Solubility Information

Solubility	DMSO: Soluble, H ₂ O: Insoluble, (< 1 mg/ml refers to the product slightly soluble or insoluble)
------------	--

Preparing Stock Solutions

	1mg	5mg	10mg
1 mM	2.3012 mL	11.5062 mL	23.0123 mL
5 mM	0.4602 mL	2.3012 mL	4.6025 mL
10 mM	0.2301 mL	1.1506 mL	2.3012 mL
50 mM	0.046 mL	0.2301 mL	0.4602 mL

Please select the appropriate solvent to prepare the stock solution, according to the solubility of the product in different solvents. Please use it as soon as possible.

Note: The dilution table applies only to solid products. For liquid products, please calculate the stock solution based on the stated concentration and/or density.

Reference

Jinnouchi H, Nozaki K, Watase H, Omiya H, Sakai S, Samukawa Y. Impact of Reduced Renal Function on the Glucose-Lowering Effects of Luseogliflozin, a Selective SGLT2 Inhibitor, Assessed by Continuous Glucose Monitoring in Japanese Patients with Type 2 Diabetes Mellitus. *Adv Ther.* 2016 Feb 5. [Epub ahead of print] PubMed PMID: 26846284.

Haneda M, Seino Y, Inagaki N, Kaku K, Sasaki T, Fukatsu A, Kakiuchi H, Sato Y, Sakai S, Samukawa Y. Influence of Renal Function on the 52-Week Efficacy and Safety of the Sodium Glucose Cotransporter 2 Inhibitor Luseogliflozin in Japanese Patients with Type 2 Diabetes Mellitus. *Clin Ther.* 2016 Jan 1;38(1):66-88.e20. doi: 10.1016/j.clinthera.2015.10.025. Epub 2015 Dec 22. PubMed PMID: 26718606.

Nishimura R, Omiya H, Sugio K, Ubukata M, Sakai S, Samukawa Y. The sodium-glucose cotransporter 2 inhibitor luseogliflozin improves glycaemic control assessed by continuous glucose monitoring even on a low-carbohydrate diet. *Diabetes Obes Metab.* 2015 Dec 6. doi: 10.1111/dom.12611. [Epub ahead of print] PubMed PMID: 26639943.

Qiang S, Nakatsu Y, Seno Y, Fujishiro M, Sakoda H, Kushiyama A, Mori K, Matsunaga Y, Yamamotoya T, Kamata H, Asano T. Treatment with the SGLT2 inhibitor luseogliflozin improves nonalcoholic steatohepatitis in a rodent model with diabetes mellitus. *Diabetol Metab Syndr.* 2015 Nov 19;7:104. doi: 10.1186/s13098-015-0102-8. eCollection 2015. PubMed PMID: 26594248; PubMed Central PMCID: PMC4653899.

Inhibitor · Natural Compounds · Compound Libraries · Recombinant Proteins

This product is for Research Use Only · Not for Human or Veterinary or Therapeutic Use

Tel:781-999-4286 E_mail:info@targetmol.com Address:34 Washington Street,Wellesley Hills,MA 02481