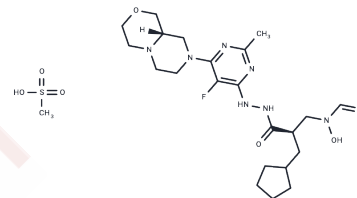


## Lanopepden mesylate

## Chemical Properties

CAS No. :	1441390-17-5
Formula:	C <sub>23</sub> H <sub>38</sub> N <sub>7</sub> O <sub>7</sub> S
Molecular Weight:	575.65
Storage:	Powder: -20°C for 3 years   In solvent: -80°C for 1 year Actual storage temperature shall be subject to the COA.



## Biological Description

Description	Lanopepden mesylate is a peptide deformylase inhibitor against Staphylococcus aureus.
Targets(IC50)	Antibacterial

## Preparing Stock Solutions

	1mg	5mg	10mg
1 mM	1.7372 mL	8.6858 mL	17.3717 mL
5 mM	0.3474 mL	1.7372 mL	3.4743 mL
10 mM	0.1737 mL	0.8686 mL	1.7372 mL
50 mM	0.0347 mL	0.1737 mL	0.3474 mL

Please select the appropriate solvent to prepare the stock solution, according to the solubility of the product in different solvents. Please use it as soon as possible.

Note: The dilution table applies only to solid products. For liquid products, please calculate the stock solution based on the stated concentration and/or density.

## Reference

Kelly Marshall Aubart et al. Peptide deformylase inhibitors: CA2857694A1

Inhibitor · Natural Compounds · Compound Libraries · Recombinant Proteins

This product is for Research Use Only · Not for Human or Veterinary or Therapeutic Use

Tel: 781-999-4286 E\_mail: info@targetmol.com Address: 34 Washington Street, Wellesley Hills, MA 02481