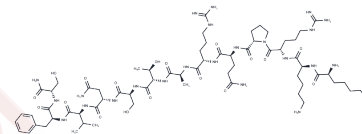


## Kemptamide

## Chemical Properties

CAS No. :	89315-28-6
Formula:	C <sub>65</sub> H <sub>112</sub> N <sub>24</sub> O <sub>18</sub>
Molecular Weight:	1517.73
Storage:	Keep away from moisture Powder: -20°C for 3 years   In solvent: -80°C for 1 year <small>Actual storage temperature shall be subject to the COA.</small>



## Biological Description

Description	Kemptamide is a synthetic peptide with 13-residue.
Targets(IC50)	Myosin

## Preparing Stock Solutions

	1mg	5mg	10mg
1 mM	0.6589 mL	3.2944 mL	6.5888 mL
5 mM	0.1318 mL	0.6589 mL	1.3178 mL
10 mM	0.0659 mL	0.3294 mL	0.6589 mL
50 mM	0.0132 mL	0.0659 mL	0.1318 mL

Please select the appropriate solvent to prepare the stock solution, according to the solubility of the product in different solvents. Please use it as soon as possible.

Note: The dilution table applies only to solid products. For liquid products, please calculate the stock solution based on the stated concentration and/or density.

## Reference

- Botterell SH, Jans DA, Hemmings BA. Characterization of two mutants of the LLC-PK1 porcine kidney cell line affected in the catalytic subunit of the cAMP-dependent protein kinase. *Eur J Biochem.* 1987 Apr 1;164(1):39-44. PubMed PMID: 2435550.
- Tokumitsu H, Hatano N, Inuzuka H, Ishikawa Y, Uyeda TQ, Smith JL, Kobayashi R. Regulatory mechanism of Dictyostelium myosin light chain kinase A. *J Biol Chem.* 2004 Jan 2;279(1):42-50. Epub 2003 Oct 21. PubMed PMID: 14570871.
- Das PR, Pramanik BN. Fast atom bombardment mass spectrometric characterization of peptides. *Mol Biotechnol.* 1998 Apr;9(2):141-54. Review. PubMed PMID: 9658391.
- Foster C, Van Fleet M, Marshak A. Tryptic digestion of myosin light chain kinase produces an inactive fragment that is activated on continued digestion. *Arch Biochem Biophys.* 1986 Dec;251(2):616-23. PubMed PMID: 3800388.

**Inhibitor · Natural Compounds · Compound Libraries · Recombinant Proteins**

This product is for Research Use Only · Not for Human or Veterinary or Therapeutic Use

Tel:781-999-4286 E\_mail:info@targetmol.com Address:34 Washington Street,Wellesley Hills,MA 02481