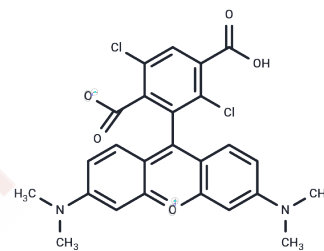


1,4-Dichloro 6-carboxytetramethylrhodamine

Chemical Properties

CAS No. :	407581-83-3
Formula:	C ₂₅ H ₂₀ Cl ₂ N ₂ O ₅
Molecular Weight:	499.34
Storage:	Keep away from direct sunlight Store at -20°C <small>Actual storage temperature shall be subject to the COA.</small>



Biological Description

Description	1,4-Dichloro 6-carboxytetramethylrhodamine is a rhodamine-class fluorescent dye with excitation/emission wavelengths of 541/568 nm.
Targets(IC50)	Others

Preparing Stock Solutions

	1mg	5mg	10mg
1 mM	2.0026 mL	10.0132 mL	20.0264 mL
5 mM	0.4005 mL	2.0026 mL	4.0053 mL
10 mM	0.2003 mL	1.0013 mL	2.0026 mL
50 mM	0.0401 mL	0.2003 mL	0.4005 mL

Please select the appropriate solvent to prepare the stock solution, according to the solubility of the product in different solvents. Please use it as soon as possible.

Note: The dilution table applies only to solid products. For liquid products, please calculate the stock solution based on the stated concentration and/or density.

Inhibitor · Natural Compounds · Compound Libraries · Recombinant Proteins

This product is for Research Use Only · Not for Human or Veterinary or Therapeutic Use

Tel: 781-999-4286 E_mail: info@targetmol.com Address: 34 Washington Street, Wellesley Hills, MA 02481