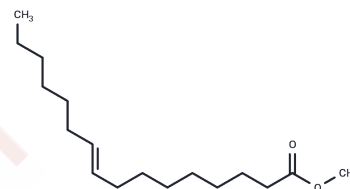


Palmitelaidic Acid methyl ester

Chemical Properties

CAS No. : 10030-74-7
Formula: C17H32O2
Molecular Weight: 268.44
Storage: Powder: -20°C for 3 years | In solvent: -80°C for 1 year
Actual storage temperature shall be subject to the COA.



Biological Description

Description	Palmitoleic acid is a common constituent of the triglycerides of human adipose tissue. Palmitoleic acid-based diets raise low-density lipoprotein cholesterol and diminish high-density lipoprotein cholesterol, even when dietary intake of cholesterol is maintained at a low level. Palmitelaidic acid is the trans isomer of the 16:1 fatty acid palmitoleic acid. While its effects on cholesterol levels are poorly studied, palmitelaidic acid can have very different effects from those of palmitoleic acid on lipid metabolism and mobilization. Palmitelaidic acid methyl ester is an ester version of the free acid which may be more amenable for the formulation of fatty acid-containing diets and dietary supplements.
Targets(IC50)	Others

Solubility Information

Solubility	DMSO: 30 mg/mL (111.76 mM),Sonication is recommended. Ethanol: 100 mg/mL (372.52 mM),Sonication is recommended. DMF: 30 mg/mL (111.76 mM),Sonication is recommended. (< 1 mg/ml refers to the product slightly soluble or insoluble)
------------	---

Preparing Stock Solutions

	1mg	5mg	10mg
1 mM	3.7252 mL	18.6261 mL	37.2523 mL
5 mM	0.745 mL	3.7252 mL	7.4505 mL
10 mM	0.3725 mL	1.8626 mL	3.7252 mL
50 mM	0.0745 mL	0.3725 mL	0.745 mL

Please select the appropriate solvent to prepare the stock solution, according to the solubility of the product in different solvents. Please use it as soon as possible.

Note: The dilution table applies only to solid products. For liquid products, please calculate the stock solution based on the stated concentration and/or density.

Inhibitor · Natural Compounds · Compound Libraries · Recombinant Proteins

This product is for Research Use Only · Not for Human or Veterinary or Therapeutic Use

Tel:781-999-4286 E_mail:info@targetmol.com Address:34 Washington Street,Wellesley Hills,MA 02481