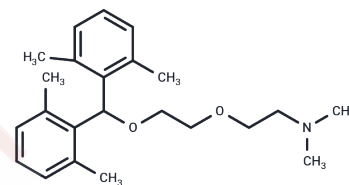


Xyloxemine

Chemical Properties

CAS No. :	1600-19-7
Formula:	C ₂₃ H ₃₃ NO ₂
Molecular Weight:	355.51
Storage:	Powder: -20°C for 3 years In solvent: -80°C for 1 year Actual storage temperature shall be subject to the COA.



Biological Description

Description	Xyloxemine is a biochemical.
Targets(IC50)	Others

Preparing Stock Solutions

	1mg	5mg	10mg
1 mM	2.8129 mL	14.0643 mL	28.1286 mL
5 mM	0.5626 mL	2.8129 mL	5.6257 mL
10 mM	0.2813 mL	1.4064 mL	2.8129 mL
50 mM	0.0563 mL	0.2813 mL	0.5626 mL

Please select the appropriate solvent to prepare the stock solution, according to the solubility of the product in different solvents. Please use it as soon as possible.

Note: The dilution table applies only to solid products. For liquid products, please calculate the stock solution based on the stated concentration and/or density.

Reference

- Hespe W, Prins H, Kafoe WF, Nauta WT. The distribution and metabolic fate of xyloxemine hydrochloride in mice and rats. *Arch Int Pharmacodyn Ther.* 1967 Dec;170(2):397-408. PubMed PMID: 6076587.
- van Eeken CJ, Mulder D. The influence of xyloxemine hydrochloride, 2-[2-(di-2,6-xylylmethoxy)ethoxy]-N,N-dimethylethylamine hydrochloride, on reproduction in laboratory animals. *Arch Int Pharmacodyn Ther.* 1967 May; 167(1):135-41. PubMed PMID: 6035090.
- Doorenbos HJ, Rekker RF, Nauta WT. Investigation of xyloxemine hydrochloride, 2-[2-(di-2,6-xylylmethoxy)ethoxy]-N,N-dimethylethylamine hydrochloride (BS 6748). *Pharm Weekbl.* 1966 Jul 1;101(26):565-9. PubMed PMID: 5916606.
- Tersteegge HM, Funcke AB, Louwerse WJ, Nauta WT. Pharmacological properties of xyloxemine hydrochloride, 2-[2-(di-2,6-xylylmethoxy)ethoxy]-N,N-dimethylethylamine hydrochloride (BS 6748), a new antitussive agent. *Arch Int Pharmacodyn Ther.* 1966 Jun;161(2):314-33. PubMed PMID: 5926874.

Inhibitor · Natural Compounds · Compound Libraries · Recombinant Proteins

This product is for Research Use Only · Not for Human or Veterinary or Therapeutic Use

Tel:781-999-4286 E_mail:info@targetmol.com Address:34 Washington Street,Wellesley Hills,MA 02481