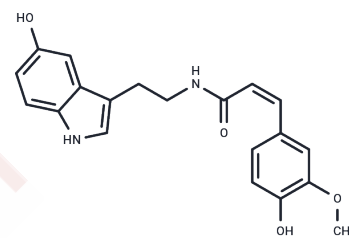


## cis-Moschamine

## Chemical Properties

CAS No. :	193224-24-7
Formula:	C <sub>20</sub> H <sub>20</sub> N <sub>2</sub> O <sub>4</sub>
Molecular Weight:	352.38
Storage:	Powder: -20°C for 3 years   In solvent: -80°C for 1 year Actual storage temperature shall be subject to the COA.



## Biological Description

Description	cis-Moschamine exerts antitumour effects on HeLa, MCF7 and A431 cells.
In vitro	The antiproliferative effects of n-hexane, chloroform and aqueous methanol extracts prepared from the whole plant of <i>Centaurea arenaria</i> M.B. ex Willd. were investigated against cervix adenocarcinoma (HeLa), breast adenocarcinoma (MCF7) and skin epidermoid carcinoma (A431) cells, using the MTT assay. METHODS AND RESULTS: The chloroform extract displayed high tumour cell proliferation inhibitory activity (higher than 85% at 10 µg/mL concentration), and was therefore subjected to a bioassay-guided multistep separation procedure. Flavonoids (eupatilin, eupatorin, 3'-methyleupatorin, apigenin and isokaempferid), lignans (arctigenin, arctiin and matairesinol), the sesquiterpene cnicin, serotonin conjugates (moschamine and cis-Moschamine), β-amyrin and β-sitosterin-β-D-glycopyranoside, identified by means of UV, MS and NMR spectroscopy, were obtained for the first time from this species. CONCLUSIONS: The isolated compounds were also evaluated for their tumour cell growth inhibitory activities on HeLa, MCF7 and A431 cells, and different types of secondary metabolites were found to be responsible for the antitumour effects of the extracts; in addition to moderately active compounds (isokaempferid and moschamine), especially apigenin, eupatorin, arctigenin, arctiin, matairesinol and cnicin exert marked antitumour effects against these cell lines.

### Preparing Stock Solutions

---

	<b>1mg</b>	<b>5mg</b>	<b>10mg</b>
1 mM	2.8378 mL	14.1892 mL	28.3785 mL
5 mM	0.5676 mL	2.8378 mL	5.6757 mL
10 mM	0.2838 mL	1.4189 mL	2.8378 mL
50 mM	0.0568 mL	0.2838 mL	0.5676 mL

---

Please select the appropriate solvent to prepare the stock solution, according to the solubility of the product in different solvents. Please use it as soon as possible.

Note: The dilution table applies only to solid products. For liquid products, please calculate the stock solution based on the stated concentration and/or density.

### Reference

Bioactivity-guided isolation of antiproliferative compounds from *Centaurea arenaria*. *Phytother Res.* 2010 Nov;24(11):1664-9.

**Inhibitor · Natural Compounds · Compound Libraries · Recombinant Proteins**

This product is for Research Use Only · Not for Human or Veterinary or Therapeutic Use

Tel:781-999-4286 E\_mail:info@targetmol.com Address:34 Washington Street,Wellesley Hills,MA 02481