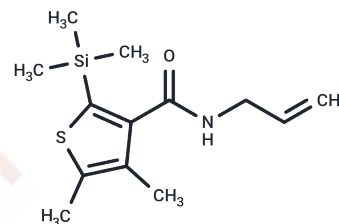


## Silthiofam

## Chemical Properties

CAS No. :	175217-20-6
Formula:	C <sub>13</sub> H <sub>21</sub> NOSSi
Molecular Weight:	267.46
Storage:	Powder: -20°C for 3 years   In solvent: -80°C for 1 year Actual storage temperature shall be subject to the COA.



## Biological Description

Description	Silthiofam is very effective against Gaeumannomyces graminis var. tritici (Ggt), recently it has been widely used for the take-all control in China. Ggt could cause Wheat take-all.
Targets(IC50)	Others,Antifungal

## Solubility Information

Solubility	DMSO: Soluble, (< 1 mg/ml refers to the product slightly soluble or insoluble)
------------	---

## Preparing Stock Solutions

	1mg	5mg	10mg
1 mM	3.7389 mL	18.6944 mL	37.3888 mL
5 mM	0.7478 mL	3.7389 mL	7.4778 mL
10 mM	0.3739 mL	1.8694 mL	3.7389 mL
50 mM	0.0748 mL	0.3739 mL	0.7478 mL

Please select the appropriate solvent to prepare the stock solution, according to the solubility of the product in different solvents. Please use it as soon as possible.

Note: The dilution table applies only to solid products. For liquid products, please calculate the stock solution based on the stated concentration and/or density.

### Reference

Yun Y, Yu F, Wang N, Chen H, Yin Y, Ma Z. Sensitivity to silthiofam, tebuconazole and difenoconazole of *Gaeumannomyces graminis* var. *tritici* isolates from China. *Pest Manag Sci*. 2012 Aug;68(8):1156-63. doi: 10.1002/ps.3277. Epub 2012 Mar 12. PubMed PMID: 22411909.

Chen X, Li Z, Cao Z, Cao X, Chen M. [Determination of six novel amide fungicides in vegetables and fruits by liquid chromatography-tandem mass spectrometry]. *Se Pu*. 2013 Oct;31(10):954-60. Chinese. PubMed PMID: 24432637.

Bailey DJ, Paveley N, Pillinger C, Foulkes J, Spink J, Gilligan CA. Epidemiology and chemical control of take-all on seminal and adventitious roots of wheat. *Phytopathology*. 2005 Jan;95(1):62-8. doi: 10.1094/PHYTO-95-0062. PubMed PMID: 18943837.

Bailey DJ, Paveley N, Spink J, Lucas P, Gilligan CA. Epidemiological analysis of take-all decline in winter wheat. *Phytopathology*. 2009 Jul;99(7):861-8. doi: 10.1094/PHYTO-99-7-0861. PubMed PMID: 19522584.

**Inhibitor · Natural Compounds · Compound Libraries · Recombinant Proteins**

This product is for Research Use Only · Not for Human or Veterinary or Therapeutic Use

Tel:781-999-4286 E\_mail:info@targetmol.com Address:34 Washington Street,Wellesley Hills,MA 02481