

LyP-1 acetate

Chemical Properties

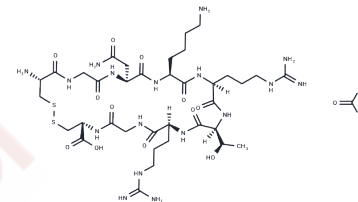
CAS No. :

Formula: C₃₈H₆₉N₁₇O₁₄S₂

Molecular Weight: 1052.19

Storage: Store at low temperature, Keep away from moisture
Powder: -20°C for 3 years | In solvent: -80°C for 1 year

Actual storage temperature shall be subject to the COA.



Biological Description

Description	LyP-1 acetate is a tumor homing peptide specifically binding to p32 receptors overexpressed in various tumor-associated cells.
Targets(IC50)	Others
In vivo	LyP-1 acetate shows a remarkable reduction in plaque formation and plaque occupation rates in the LyP-1 acetate-treated group. In addition, a higher apoptotic rate in macrophages released from hypoxic plaques is observed after the treatment of LyP-1 acetate when compared to the control peptide[2].

Preparing Stock Solutions

	1mg	5mg	10mg
1 mM	0.9504 mL	4.752 mL	9.504 mL
5 mM	0.1901 mL	0.9504 mL	1.9008 mL
10 mM	0.095 mL	0.4752 mL	0.9504 mL
50 mM	0.019 mL	0.095 mL	0.1901 mL

Please select the appropriate solvent to prepare the stock solution, according to the solubility of the product in different solvents. Please use it as soon as possible.

Note: The dilution table applies only to solid products. For liquid products, please calculate the stock solution based on the stated concentration and/or density.

Reference

Ningning Song, et al. Recent progress in LyP-1-based strategies for targeted imaging and therapy. Drug Deliv. 2019 Dec;26(1):363-375.

Fan Zhang, et al. Imaging tumor-induced sentinel lymph node lymphangiogenesis with LyP-1 peptide. Amino Acids. 2012 Jun;42(6):2343-51.

Inhibitor · Natural Compounds · Compound Libraries · Recombinant Proteins

This product is for Research Use Only · Not for Human or Veterinary or Therapeutic Use

Tel:781-999-4286 E_mail:info@targetmol.com Address:34 Washington Street,Wellesley Hills,MA 02481