

SLLK, Control Peptide for TSP1 Inhibitor acetate

Chemical Properties

CAS No. :

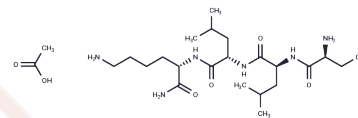
Formula: C₂₃H₄₆N₆O₇

Molecular Weight: 518.66

Keep away from moisture

Storage: Powder: -20°C for 3 years | In solvent: -80°C for 1 year

Actual storage temperature shall be subject to the COA.



Biological Description

Description	SLLK, Control Peptide for TSP1 Inhibitor acetate is a control peptide for LSKL.
Targets(IC50)	Others
In vivo	TGF-β1 is significantly lower (0.10±0.01 pg/mL) in the plasma of mice receiving LSKL compared with that in plasma of mice receiving SLLK control peptide at day 42 (0.20±0.02 pg/mL; P=0.0001). mRNA expression is assessed in the suprarenal aortic lysates obtained from mice receiving SLLK and LSKL peptides[1]. Akita mice treated with 30 mg/kg LSKL have significantly increased nephrin expression, greater than twofold, compared with renal lysates from either saline controls or SLLK-treated mice[2].

Solubility Information

Solubility	DMSO: 10 mM, Sonication is recommended. (< 1 mg/ml refers to the product slightly soluble or insoluble)
------------	--

Preparing Stock Solutions

	1mg	5mg	10mg
1 mM	1.928 mL	9.6402 mL	19.2805 mL
5 mM	0.3856 mL	1.928 mL	3.8561 mL
10 mM	0.1928 mL	0.964 mL	1.928 mL
50 mM	0.0386 mL	0.1928 mL	0.3856 mL

Please select the appropriate solvent to prepare the stock solution, according to the solubility of the product in different solvents. Please use it as soon as possible.

Note: The dilution table applies only to solid products. For liquid products, please calculate the stock solution based on the stated concentration and/or density.

Reference

Krishna SM, et al. A peptide antagonist of thrombospondin-1 promotes abdominal aortic aneurysm progression in the angiotensin II-infused apolipoprotein-E-deficient mouse. *Arterioscler Thromb Vasc Biol.* 2015 Feb;35(2):389-98.

Inhibitor · Natural Compounds · Compound Libraries · Recombinant Proteins

This product is for Research Use Only · Not for Human or Veterinary or Therapeutic Use

Tel:781-999-4286 E_mail:info@targetmol.com Address:34 Washington Street,Wellesley Hills,MA 02481