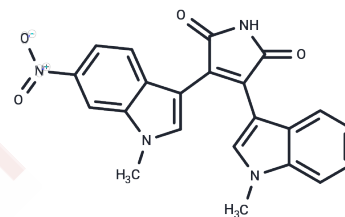


MKC-1

Chemical Properties

CAS No. : 125313-92-0
 Formula: C₂₂H₁₆N₄O₄
 Molecular Weight: 400.39
 Storage: Powder: -20°C for 3 years | In solvent: -80°C for 1 year
Actual storage temperature shall be subject to the COA.



Biological Description

Description	MKC-1 (Ro-31-7453) is an orally bioavailable small-molecule bisindolylmaleimide cell cycle inhibitor with potential antineoplastic activity. MKC-1 and its metabolites inhibit tubulin polymerization, blocking mitotic spindle formation, which may result in apoptosis and tumor cell death.
Targets(IC50)	Apoptosis,Akt,Microtubule Associated,mTOR

Solubility Information

Solubility	DMSO: 55 mg/mL (137.37 mM),Sonication is recommended. (< 1 mg/ml refers to the product slightly soluble or insoluble)
------------	--

Preparing Stock Solutions

	1mg	5mg	10mg
1 mM	2.4976 mL	12.4878 mL	24.9756 mL
5 mM	0.4995 mL	2.4976 mL	4.9951 mL
10 mM	0.2498 mL	1.2488 mL	2.4976 mL
50 mM	0.050 mL	0.2498 mL	0.4995 mL

Please select the appropriate solvent to prepare the stock solution, according to the solubility of the product in different solvents. Please use it as soon as possible.

Note: The dilution table applies only to solid products. For liquid products, please calculate the stock solution based on the stated concentration and/or density.

Reference

Jason E Faris,et al. A phase 2 study of oral MKC-1, an inhibitor of importin-β, tubulin, and the mTOR pathway in patients with unresectable or metastatic pancreatic cancer.Invest New Drugs. 2012 Aug;30(4):1614-20.

Inhibitor · Natural Compounds · Compound Libraries · Recombinant Proteins

This product is for Research Use Only · Not for Human or Veterinary or Therapeutic Use

Tel:781-999-4286 E_mail:info@targetmol.com Address:34 Washington Street,Wellesley Hills,MA 02481