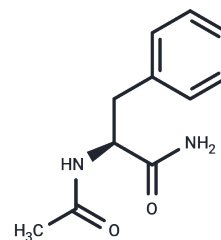


Ac-Phe-NH<sub>2</sub>

## Chemical Properties

CAS No. :	7376-90-1
Formula:	C <sub>11</sub> H <sub>14</sub> N <sub>2</sub> O <sub>2</sub>
Molecular Weight:	206.24
Storage:	Powder: -20°C for 3 years   In solvent: -80°C for 1 year Actual storage temperature shall be subject to the COA.



## Biological Description

Description	Ac-Phe-NH <sub>2</sub> is a non-competitive inhibitor of polyubiquitin chain elongation with a K <sub>i</sub> value of 8 ± 1.2 mM.
Targets(IC <sub>50</sub> )	Others,E1/E2/E3 Enzyme

## Solubility Information

Solubility	DMSO: 4.4 mg/mL (21.33 mM),Sonication is recommended. (< 1 mg/ml refers to the product slightly soluble or insoluble)
------------	--

## Preparing Stock Solutions

	1mg	5mg	10mg
1 mM	4.8487 mL	24.2436 mL	48.4872 mL
5 mM	0.9697 mL	4.8487 mL	9.6974 mL
10 mM	0.4849 mL	2.4244 mL	4.8487 mL
50 mM	0.097 mL	0.4849 mL	0.9697 mL

Please select the appropriate solvent to prepare the stock solution, according to the solubility of the product in different solvents. Please use it as soon as possible.

Note: The dilution table applies only to solid products. For liquid products, please calculate the stock solution based on the stated concentration and/or density.

### Reference

Loquais Y, Gloaguen E, Alauddin M, Brenner V, Tardivel B, Mons M. On the near UV photophysics of a phenylalanine residue: conformation-dependent  $\pi\pi^*$  state deactivation revealed by laser spectroscopy of isolated neutral dipeptides. *Phys Chem Chem Phys*. 2014 Oct 28;16(40):22192-200. doi: 10.1039/c4cp03401e. Epub 2014 Sep 12. PubMed PMID: 25213197.

Meredith D, Temple CS, Guha N, Sword CJ, Boyd CA, Collier ID, Morgan KM, Bailey PD. Modified amino acids and peptides as substrates for the intestinal peptide transporter PepT1. *Eur J Biochem*. 2000 Jun;267(12):3723-8. PubMed PMID: 10848990.

DeTar DF. Computation of enzyme-substrate specificity. *Biochemistry*. 1981 Mar 31;20(7):1730-43. PubMed PMID: 7225355.

**Inhibitor · Natural Compounds · Compound Libraries · Recombinant Proteins**

This product is for Research Use Only · Not for Human or Veterinary or Therapeutic Use

Tel:781-999-4286 E\_mail:info@targetmol.com Address:34 Washington Street,Wellesley Hills,MA 02481