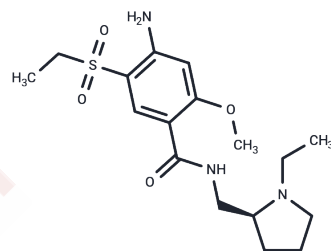


## (S)-Amisulpride

## Chemical Properties

CAS No. :	71675-92-8
Formula:	C17H27N3O4S
Molecular Weight:	369.48
Storage:	Pure form: -20°C for 3 years   In solvent: -80°C for 1 year Actual storage temperature shall be subject to the COA.



## Biological Description

Description	(S)-Amisulpride ((S) Amisulpride) (Esamisulpride) is a potent dopamine D2/D3 receptor antagonist. (S)-Amisulpride is an antagonist at the 5-HT7 receptor with a $K_i$ of 900 nM. (S)-Amisulpride has antipsychotic and antidepressant effects.
Targets(IC50)	5-HT Receptor, Dopamine Receptor

## Solubility Information

Solubility	DMSO: 100 mg/mL (270.65 mM), Sonication is recommended. ( $< 1$ mg/ml refers to the product slightly soluble or insoluble)
In vivo Formulation	10% DMSO+40% PEG300+5% Tween 80+45% Saline: 4 mg/mL (10.83 mM), Sonication is recommended. <i>Please add the solvents sequentially, clarifying the solution as much as possible before adding the next one. Dissolve by heating and/or sonication if necessary. Working solution is recommended to be prepared and used immediately. The formulation provided above is for reference purposes only. In vivo formulations may vary and should be modified based on specific experimental conditions.</i>

## Preparing Stock Solutions

	1mg	5mg	10mg
1 mM	2.7065 mL	13.5325 mL	27.0651 mL
5 mM	0.5413 mL	2.7065 mL	5.413 mL
10 mM	0.2707 mL	1.3533 mL	2.7065 mL
50 mM	0.0541 mL	0.2707 mL	0.5413 mL

Please select the appropriate solvent to prepare the stock solution, according to the solubility of the product in different solvents. Please use it as soon as possible.

Note: The dilution table applies only to solid products. For liquid products, please calculate the stock solution based on the stated concentration and/or density.

### Reference

- Timothy J Donahue, et al. (S)-amisulpride as a discriminative stimulus in C57BL/6 mice and its comparison to the stimulus effects of typical and atypical antipsychotics. *Eur J Pharmacol.* 2014 Jul 5;734:15-22.
- Donahue TJ, Hillhouse TM, Webster KA, Young R, De Oliveira EO, Porter JH. Discriminative stimulus properties of the atypical antipsychotic amisulpride: comparison to its isomers and to other benzamide derivatives, antipsychotic, antidepressant, and antianxiety drugs in C57BL/6 mice. *Psychopharmacology (Berl).* 2017 Dec;234(23-24):3507-3520. doi: 10.1007/s00213-017-4738-y. Epub 2017 Sep 18. PubMed PMID: 28921163.
- Liang Y, Yu X. Effectiveness of amisulpride in Chinese patients with predominantly negative symptoms of schizophrenia: a subanalysis of the ESCAPE study. *Neuropsychiatr Dis Treat.* 2017 Jun 28;13:1703-1712. doi: 10.2147/NDT.S140905. eCollection 2017. PubMed PMID: 28721051; PubMed Central PMCID: PMC5499925.
- Graf H, Wieggers M, Metzger CD, Walter M, Grön G, Abler B. Noradrenergic modulation of neural erotic stimulus perception. *Eur Neuropsychopharmacol.* 2017 Sep;27(9):845-853. doi: 10.1016/j.euroneuro.2017.06.015. Epub 2017 Jul 3. PubMed PMID: 28683981.

**Inhibitor · Natural Compounds · Compound Libraries · Recombinant Proteins**

This product is for Research Use Only · Not for Human or Veterinary or Therapeutic Use

Tel:781-999-4286 E\_mail:info@targetmol.com Address:34 Washington Street,Wellesley Hills,MA 02481