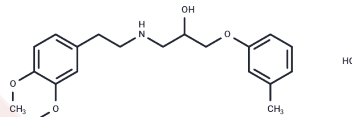


## Bevantolol hydrochloride

## Chemical Properties

CAS No. :	42864-78-8
Formula:	C <sub>20</sub> H <sub>28</sub> ClNO <sub>4</sub>
Molecular Weight:	381.9
Storage:	Powder: -20°C for 3 years   In solvent: -80°C for 1 year Actual storage temperature shall be subject to the COA.



## Biological Description

Description	Bevantolol hydrochloride (NC-1400 hydrochloride) is a $\beta$ 1-adrenoceptor antagonist that treatment angina pectoris and hypertension.
Targets(IC50)	Calcium Channel,Adrenergic Receptor

## Solubility Information

Solubility	DMSO: 76 mg/mL (199 mM),Sonication is recommended. Ethanol: 61 mg/mL (159.73 mM),Sonication is recommended. H <sub>2</sub> O: 52 mg/mL (136.16 mM),Sonication is recommended. ( $< 1$ mg/ml refers to the product slightly soluble or insoluble)
In vivo Formulation	10% DMSO+40% PEG300+5% Tween-80+45% Saline: 5 mg/mL (13.09 mM),Sonication is recommended. <i>Please add the solvents sequentially, clarifying the solution as much as possible before adding the next one. Dissolve by heating and/or sonication if necessary. Working solution is recommended to be prepared and used immediately. The formulation provided above is for reference purposes only. In vivo formulations may vary and should be modified based on specific experimental conditions.</i>

## Preparing Stock Solutions

	1mg	5mg	10mg
1 mM	2.6185 mL	13.0924 mL	26.1849 mL
5 mM	0.5237 mL	2.6185 mL	5.237 mL
10 mM	0.2618 mL	1.3092 mL	2.6185 mL
50 mM	0.0524 mL	0.2618 mL	0.5237 mL

Please select the appropriate solvent to prepare the stock solution, according to the solubility of the product in different solvents. Please use it as soon as possible.

Note: The dilution table applies only to solid products. For liquid products, please calculate the stock solution based on the stated concentration and/or density.

Reference

Noshiro T , Miura Y , Yoshinaga K , et al. Clinical evaluation of bevantolol hydrochloride in patients with severe hypertension. The Cooperative Study Group on Bevantolol in Japan[[]]. International Journal of Clinical Pharmacology & Therapeutics, 1995, 33(4):240-245.

**Inhibitor · Natural Compounds · Compound Libraries · Recombinant Proteins**

This product is for Research Use Only· Not for Human or Veterinary or Therapeutic Use

Tel:781-999-4286 E\_mail:info@targetmol.com Address:34 Washington Street,Wellesley Hills,MA 02481