

Ac-Endothelin-1 (16-21), human acetate

Chemical Properties

CAS No. :

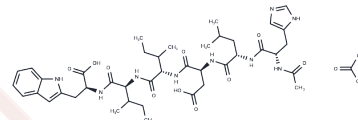
Formula: C43H63N9O12

Molecular Weight: 898.01

Keep away from moisture

Storage: Powder: -20°C for 3 years | In solvent: -80°C for 1 year

Actual storage temperature shall be subject to the COA.



Biological Description

Description	Ac-Endothelin-1 (16-21), human acetate, the principal peptide of the endothelin family, has been shown to have a variety of biological activities in both vascular and nonvascular tissues. The C-terminal fragment, which is a highly conserved sequence in the peptides of the ET family, has been shown to discriminate between the two ET receptor subtypes termed ETA and ETB since it activates only the latter ones.
Targets(IC50)	Others

Solubility Information

Solubility	DMSO: 100 mg/mL (111.36 mM), Sonication and heating are recommended. (< 1 mg/ml refers to the product slightly soluble or insoluble)
------------	--

Preparing Stock Solutions

	1mg	5mg	10mg
1 mM	1.1136 mL	5.5679 mL	11.1357 mL
5 mM	0.2227 mL	1.1136 mL	2.2271 mL
10 mM	0.1114 mL	0.5568 mL	1.1136 mL
50 mM	0.0223 mL	0.1114 mL	0.2227 mL

Please select the appropriate solvent to prepare the stock solution, according to the solubility of the product in different solvents. Please use it as soon as possible.

Note: The dilution table applies only to solid products. For liquid products, please calculate the stock solution based on the stated concentration and/or density.

Inhibitor · Natural Compounds · Compound Libraries · Recombinant Proteins

This product is for Research Use Only · Not for Human or Veterinary or Therapeutic Use

Tel:781-999-4286 E_mail:info@targetmol.com Address:34 Washington Street,Wellesley Hills,MA 02481