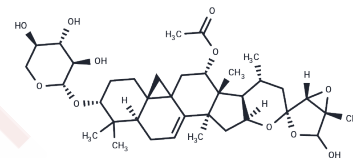


Cimicifugoside

Chemical Properties

| | |
|-------------------|---|
| CAS No. : | 66176-93-0 |
| Formula: | C ₃₇ H ₅₄ O ₁₁ |
| Molecular Weight: | 674.8 |
| Storage: | Powder: -20°C for 3 years In solvent: -80°C for 1 year Actual storage temperature shall be subject to the COA. |



Biological Description

| | |
|---------------|---|
| Description | Cimicifugoside, a triterpenoid isolated from Cimicifuga simplex, is a novel, specific nucleoside transport inhibitor and exhibits immunosuppressive activity. |
| Targets(IC50) | Others |

Solubility Information

| | |
|------------|--|
| Solubility | H ₂ O: 100 mg/mL (148.19 mM), Sonication is recommended. Ethanol: 100 mg/mL (148.19 mM), Sonication is recommended. DMSO: 100 mg/mL (148.19 mM), Sonication is recommended. (< 1 mg/ml refers to the product slightly soluble or insoluble) |
|------------|--|

Preparing Stock Solutions

| | 1mg | 5mg | 10mg |
|-------|-----------|-----------|------------|
| 1 mM | 1.4819 mL | 7.4096 mL | 14.8192 mL |
| 5 mM | 0.2964 mL | 1.4819 mL | 2.9638 mL |
| 10 mM | 0.1482 mL | 0.741 mL | 1.4819 mL |
| 50 mM | 0.0296 mL | 0.1482 mL | 0.2964 mL |

Please select the appropriate solvent to prepare the stock solution, according to the solubility of the product in different solvents. Please use it as soon as possible.

Note: The dilution table applies only to solid products. For liquid products, please calculate the stock solution based on the stated concentration and/or density.

Reference

- Yawata A, et al. Inhibition of nucleoside transport and synergistic potentiation of methotrexate cytotoxicity by cimicifugoside, a triterpenoid from Cimicifuga simplex. Eur J Pharm Sci. 2009 Nov 5;38(4):355-61.
- Hemmi H, et al. The immune response of splenic lymphocytes after cimicifugoside treatment in vitro and pretreatment in vivo. J Pharmacobiodyn. 1980 Dec;3(12):643-8.

Inhibitor · Natural Compounds · Compound Libraries · Recombinant Proteins

This product is for Research Use Only · Not for Human or Veterinary or Therapeutic Use

Tel:781-999-4286 E_mail:info@targetmol.com Address:34 Washington Street,Wellesley Hills,MA 02481