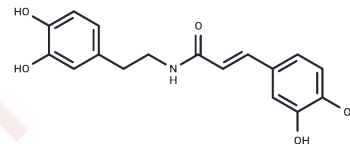


N-(E)-Caffeoyldopamine

Chemical Properties

CAS No. :	103188-49-4
Formula:	C ₁₇ H ₁₇ NO ₅
Molecular Weight:	315.32
Storage:	Powder: -20°C for 3 years In solvent: -80°C for 1 year Actual storage temperature shall be subject to the COA.



Biological Description

Description	N-(E)-Caffeoyldopamine is capable of interacting with proteins and other molecules in a variety of ways and has been used to study protein-protein interactions as well as enzyme-substrate interactions.
Targets(IC50)	Others, glycosidase

Preparing Stock Solutions

	1mg	5mg	10mg
1 mM	3.1714 mL	15.8569 mL	31.7138 mL
5 mM	0.6343 mL	3.1714 mL	6.3428 mL
10 mM	0.3171 mL	1.5857 mL	3.1714 mL
50 mM	0.0634 mL	0.3171 mL	0.6343 mL

Please select the appropriate solvent to prepare the stock solution, according to the solubility of the product in different solvents. Please use it as soon as possible.

Note: The dilution table applies only to solid products. For liquid products, please calculate the stock solution based on the stated concentration and/or density.

Reference

Zhu C, Niu H, Nie A, Bian M. Bioactivity-guided separation of potential α -glycosidase inhibitor from clerodendranthus spicatus based on HSCCC coupled with molecular docking. Sci Rep. 2021 Mar 25;11(1):6914.

Inhibitor · Natural Compounds · Compound Libraries · Recombinant Proteins

This product is for Research Use Only · Not for Human or Veterinary or Therapeutic Use

Tel: 781-999-4286 E_mail: info@targetmol.com Address: 34 Washington Street, Wellesley Hills, MA 02481