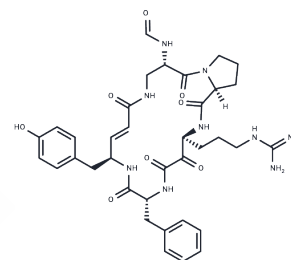


Cyclotheonamide A

Chemical Properties

CAS No. :	129033-04-1
Formula:	C ₃₆ H ₄₅ N ₉ O ₈
Molecular Weight:	731.8
Storage:	Powder: -20°C for 3 years In solvent: -80°C for 1 year Actual storage temperature shall be subject to the COA.



Biological Description

Description	Cyclotheonamide A is a cyclic peptide isolated from the marine sponge Theonella.
Targets(IC50)	Others

Preparing Stock Solutions

	1mg	5mg	10mg
1 mM	1.3665 mL	6.8325 mL	13.6649 mL
5 mM	0.2733 mL	1.3665 mL	2.733 mL
10 mM	0.1366 mL	0.6832 mL	1.3665 mL
50 mM	0.0273 mL	0.1366 mL	0.2733 mL

Please select the appropriate solvent to prepare the stock solution, according to the solubility of the product in different solvents. Please use it as soon as possible.

Note: The dilution table applies only to solid products. For liquid products, please calculate the stock solution based on the stated concentration and/or density.

Reference

Maryanoff BE, Qiu X, Padmanabhan KP, Tulinsky A, Almond HR Jr, Andrade-Gordon P, Greco MN, Kauffman JA, Nicolaou KC, Liu A, et al. Molecular basis for the inhibition of human alpha-thrombin by the macrocyclic peptide cyclotheonamide A. Proc Natl Acad Sci U S A. 1993 Sep 1;90(17):8048-52. PubMed PMID: 8367461; PubMed Central PMCID: PMC47285.

Ganesh V, Lee AY, Clardy J, Tulinsky A. Comparison of the structures of the cyclotheonamide A complexes of human alpha-thrombin and bovine beta-trypsin. Protein Sci. 1996 May;5(5):825-35. PubMed PMID: 8732754; PubMed Central PMCID: PMC2143408.

Lewis SD, Ng AS, Baldwin JJ, Fusetani N, Naylor AM, Shafer JA. Inhibition of thrombin and other trypsin-like serine proteinases by cyclotheonamide A. Thromb Res. 1993 Apr 15;70(2):173-90. PubMed PMID: 8322286.

Schaschke N, Sommerhoff CP. Upgrading a natural product: inhibition of human beta-tryptase by cyclotheonamide analogues. ChemMedChem. 2010 Mar 1;5(3):367-70. doi: 10.1002/cmdc.200900484. PubMed PMID: 20077463.

Inhibitor · Natural Compounds · Compound Libraries · Recombinant Proteins

This product is for Research Use Only · Not for Human or Veterinary or Therapeutic Use

Tel:781-999-4286 E_mail:info@targetmol.com Address:34 Washington Street,Wellesley Hills,MA 02481