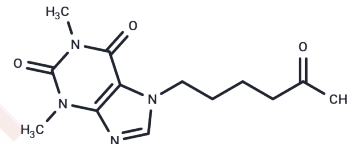


Lomifylline

Chemical Properties

CAS No. :	10226-54-7
Formula:	C ₁₃ H ₁₈ N ₄ O ₃
Molecular Weight:	278.31
Storage:	Powder: -20°C for 3 years In solvent: -80°C for 1 year Actual storage temperature shall be subject to the COA.



Biological Description

Description	Lomifylline is an inducer that induces the release of Ca ²⁺ stored in cells, specifically through the ryanodine receptor.
Targets(IC50)	Others

Preparing Stock Solutions

	1mg	5mg	10mg
1 mM	3.5931 mL	17.9656 mL	35.9312 mL
5 mM	0.7186 mL	3.5931 mL	7.1862 mL
10 mM	0.3593 mL	1.7966 mL	3.5931 mL
50 mM	0.0719 mL	0.3593 mL	0.7186 mL

Please select the appropriate solvent to prepare the stock solution, according to the solubility of the product in different solvents. Please use it as soon as possible.

Note: The dilution table applies only to solid products. For liquid products, please calculate the stock solution based on the stated concentration and/or density.

Reference

Le Poncin-Lafitte M, Grosdemouge C, Billon CR, Duterte D, Pontrat P, Lespinasse P, Rapin JR. Short-term memory and cerebral ischemia: pharmacological application. Eur Neurol. 1981;20(3):265-9. PubMed PMID: 7262126.

Inhibitor · Natural Compounds · Compound Libraries · Recombinant Proteins

This product is for Research Use Only. Not for Human or Veterinary or Therapeutic Use

Tel:781-999-4286 E_mail:info@targetmol.com Address:34 Washington Street,Wellesley Hills,MA 02481