

Salmefamol

Chemical Properties

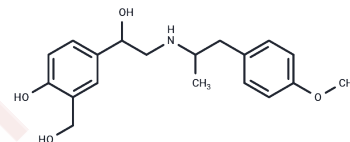
CAS No. : 18910-65-1

Formula: C₁₉H₂₅NO₄

Molecular Weight: 331.41

Storage: Powder: -20°C for 3 years | In solvent: -80°C for 1 year

Actual storage temperature shall be subject to the COA.



Biological Description

Description	Salmefamol (AH3923) is an orally active β ₂ -adrenergic receptor agonist and bronchodilator used for respiratory diseases such as asthma and chronic obstructive pulmonary disease.
Targets(IC50)	Adrenergic Receptor

Solubility Information

Solubility	DMSO: Soluble, (< 1 mg/ml refers to the product slightly soluble or insoluble)
------------	--

Preparing Stock Solutions

	1mg	5mg	10mg
1 mM	3.0174 mL	15.0871 mL	30.1741 mL
5 mM	0.6035 mL	3.0174 mL	6.0348 mL
10 mM	0.3017 mL	1.5087 mL	3.0174 mL
50 mM	0.0603 mL	0.3017 mL	0.6035 mL

Please select the appropriate solvent to prepare the stock solution, according to the solubility of the product in different solvents. Please use it as soon as possible.

Note: The dilution table applies only to solid products. For liquid products, please calculate the stock solution based on the stated concentration and/or density.

Reference

- Campbell IA, Dash CH, McHardy GJ, Shotter MV. Comparison of salmefamol and salbutamol in patients with chronic airways obstruction. *Br J Clin Pharmacol*. 1976 Feb;3(1):151-5. PubMed PMID: 788738; PubMed Central PMCID: PMC1428820.
- Kennedy MC, et al. New bronchodilator aerosol, salmefamol, in asthma. *Acta Allergol*. 1975 Apr;30(1):19-33.
- Evans ME, et al. The clinical pharmacology of salmefamol. *Br J Clin Pharmacol*. 1974 Oct;1(5):391-7.
- R. T. BRITTAIN, et al. α -[(t-Butylamino)methyl]-4-hydroxy-m-xylene- α 1, α 3-diol (AH.3365): a Selective β -Adrenergic Stimulant. *Nature*. 219, pages862-863 (1968).

Inhibitor · Natural Compounds · Compound Libraries · Recombinant Proteins

This product is for Research Use Only · Not for Human or Veterinary or Therapeutic Use

Tel:781-999-4286 E_mail:info@targetmol.com Address:34 Washington Street,Wellesley Hills,MA 02481